

Obs	sex	shintyou	taijyuu	kyoui	jitaku	kodukai	carryer	tsuuwa
1	F	145.5	42.0	76	自宅生	0		3700
2	F	146.7	41.0	85	自宅生	10000	Vodafone	6000
3	F	148.0	43.0	80	自宅生	50000	DoCoMo	4000
4	F	150.0	46.0	86		40000		.
5	F	151.7	41.5	80	自宅生	35000		.
6	F	152.0	35.0	77	自宅生	60000	DoCoMo	2000
7	F	153.0	46.5	87	下宿生	10000		.
8	F	153.0	55.0	78	自宅生	30000		.
9	F	154.4	44.0	75	自宅生	9000	au	2000
10	F	155.0	48.0	83	下宿生	180000		.

The REG Procedure

Model: MODEL1

Dependent Variable: taijyuu

Number of Observations Read	190
Number of Observations Used	190

Analysis of Variance					
Source	DF	Sum of Squares	Mean Square	F Value	Pr > F
Model	2	10875	5437.31452	217.73	<.0001
Error	187	4669.99539	24.97324		
Corrected Total	189	15545			

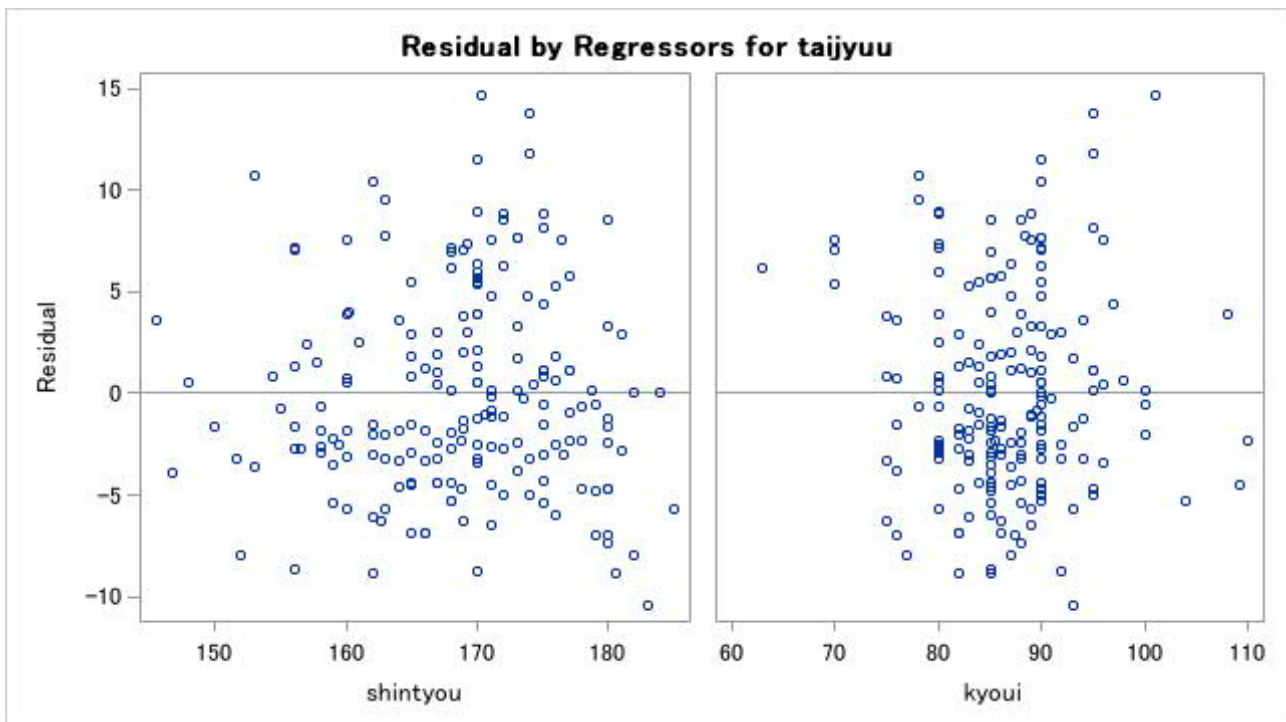
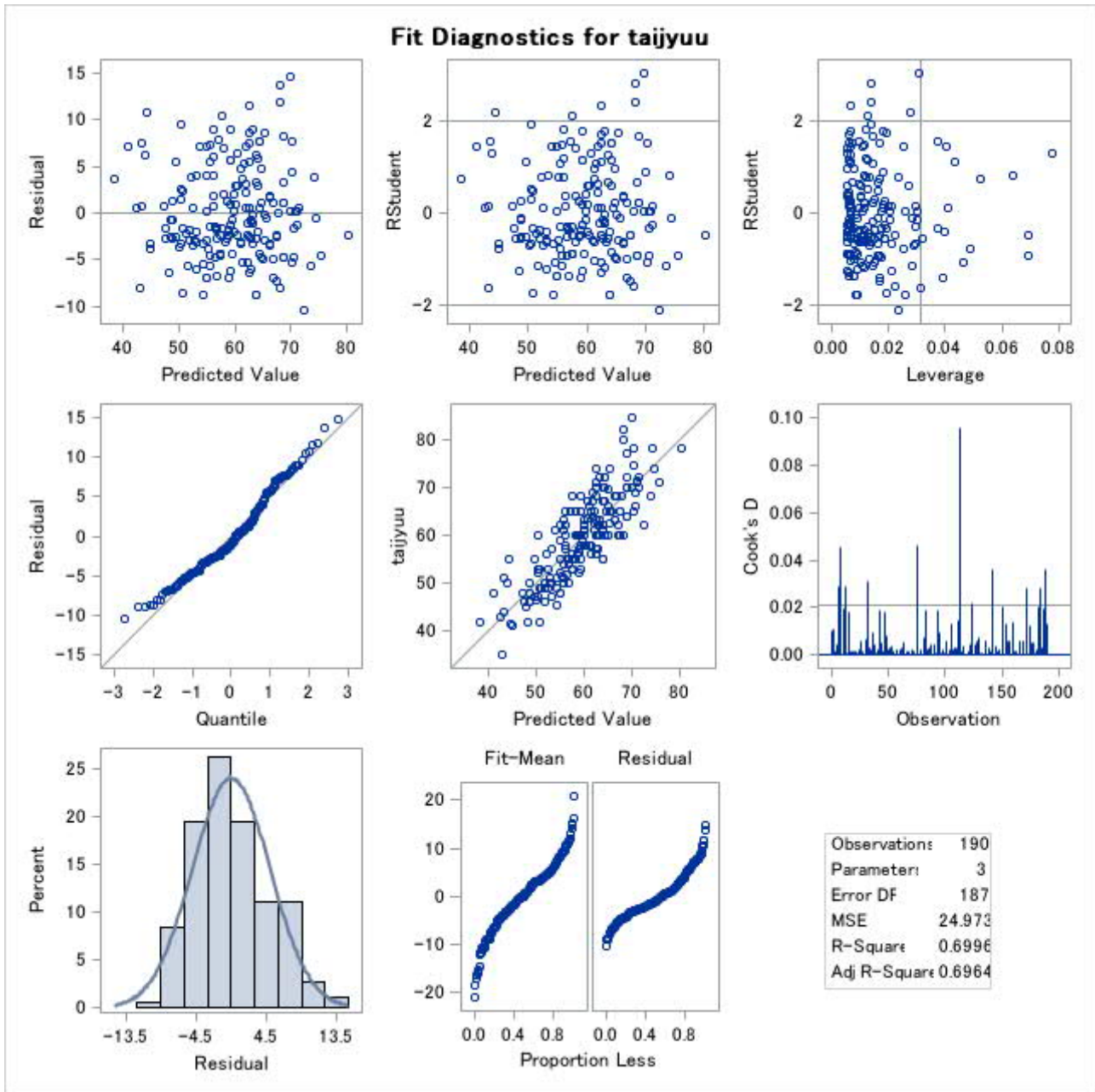
Root MSE	4.99732	R-Square	0.6996
Dependent Mean	59.41368	Adj R-Sq	0.6964
Coeff Var	8.41106		

Parameter Estimates					
Variable	DF	Parameter Estimate	Standard Error	t Value	Pr > t
Intercept	1	-100.47535	8.03701	-12.50	<.0001
shintyou	1	0.61679	0.04899	12.59	<.0001
kyoui	1	0.64585	0.05742	11.25	<.0001

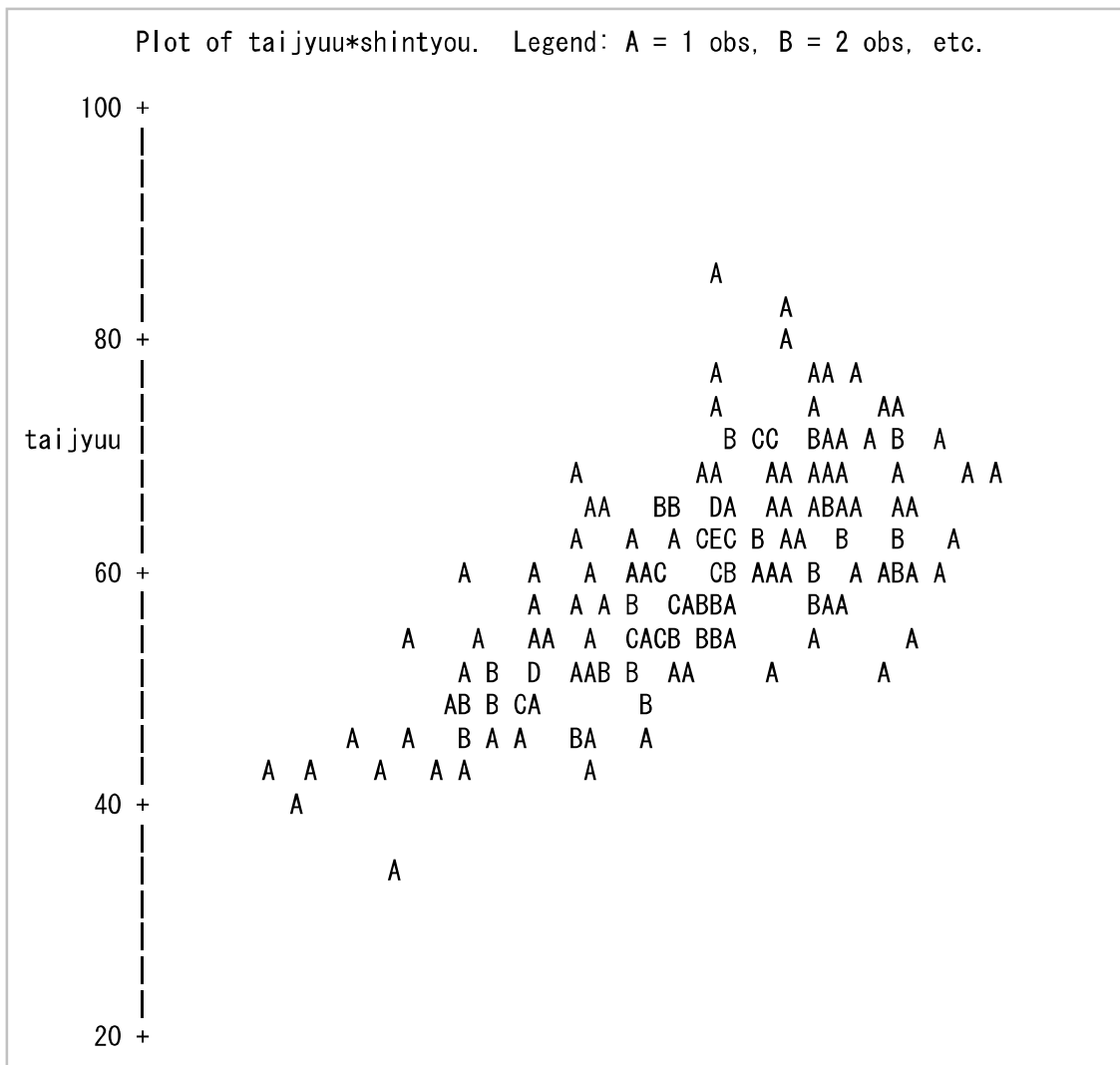
The REG Procedure

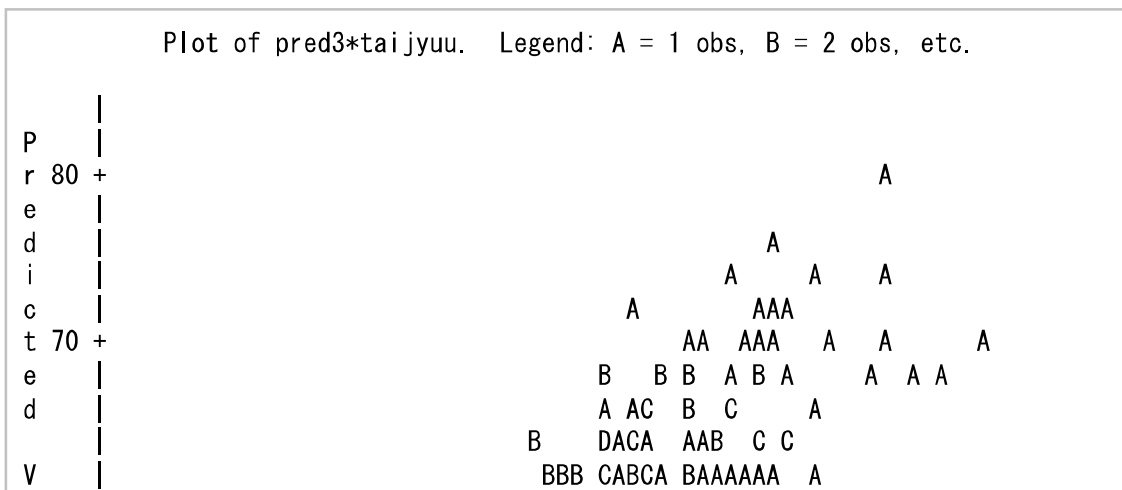
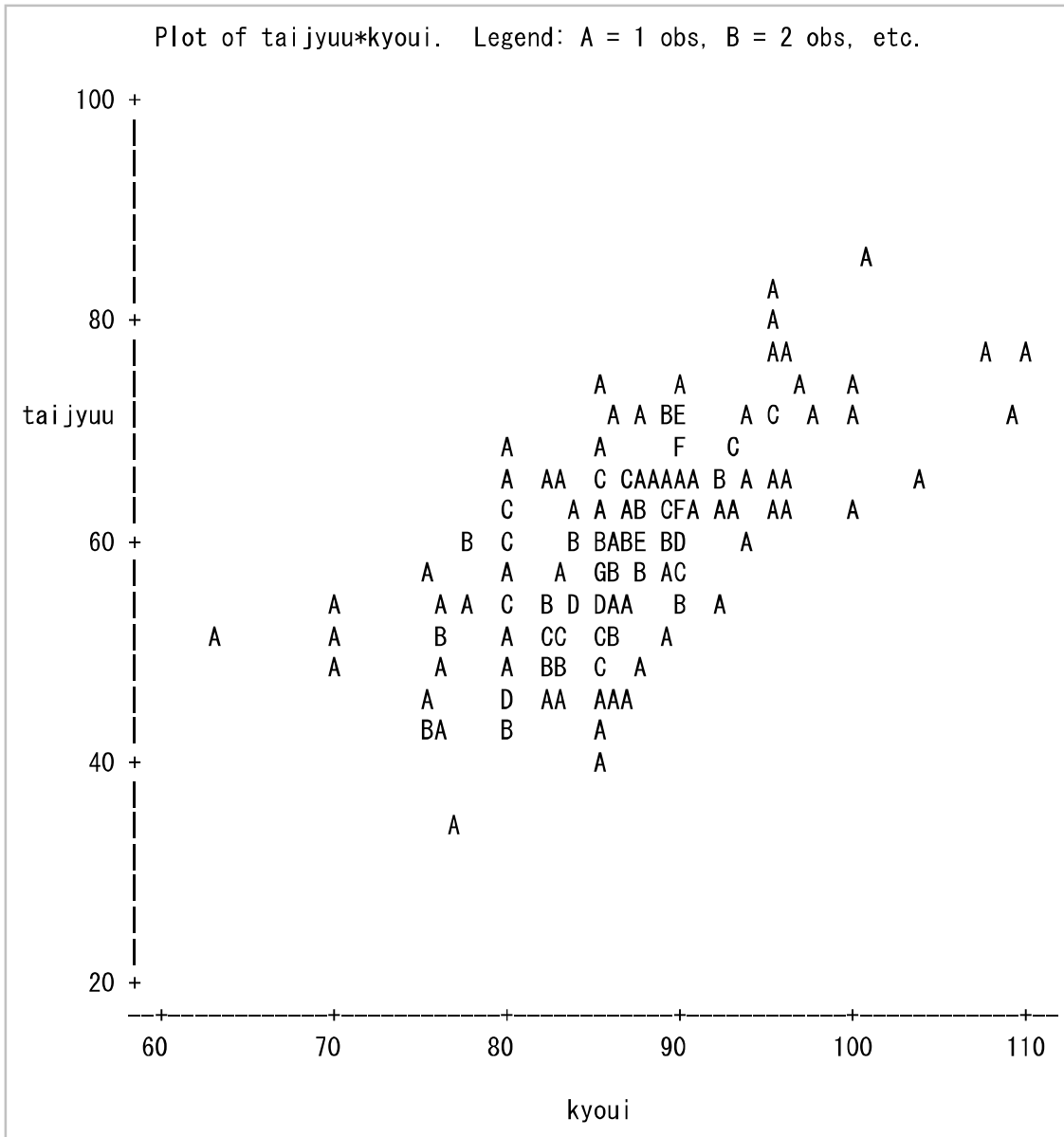
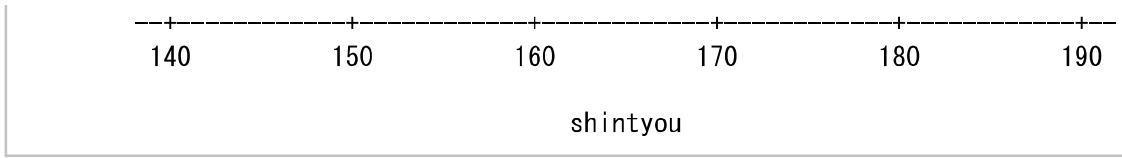
Model: MODEL1

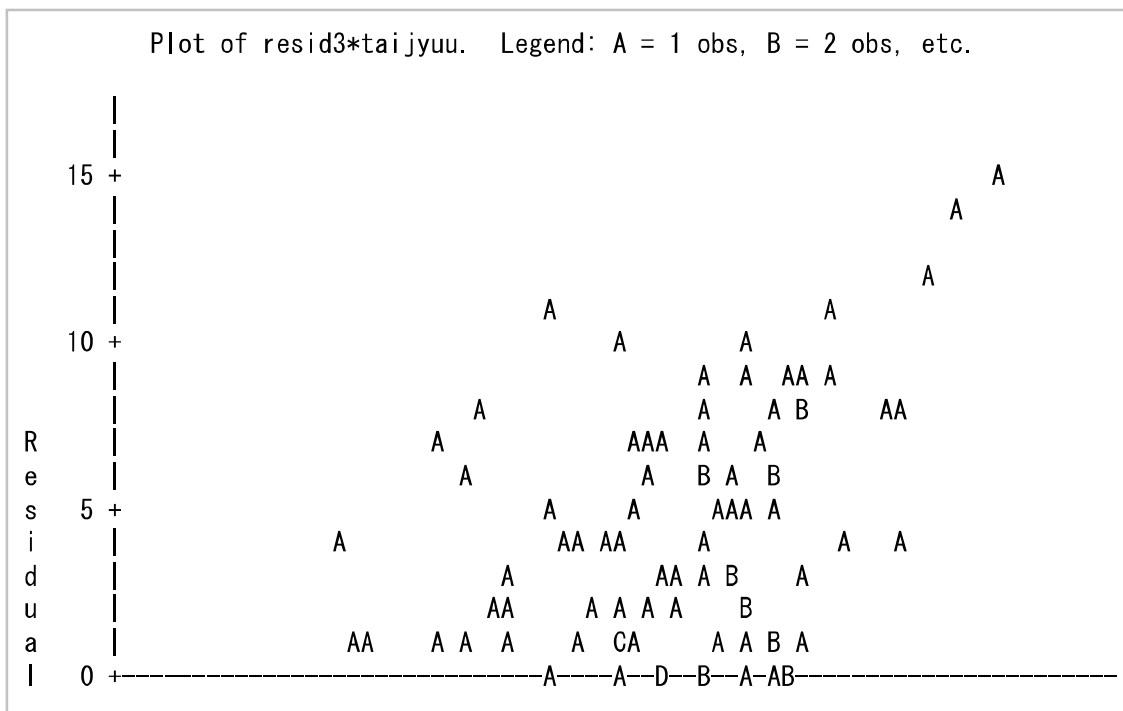
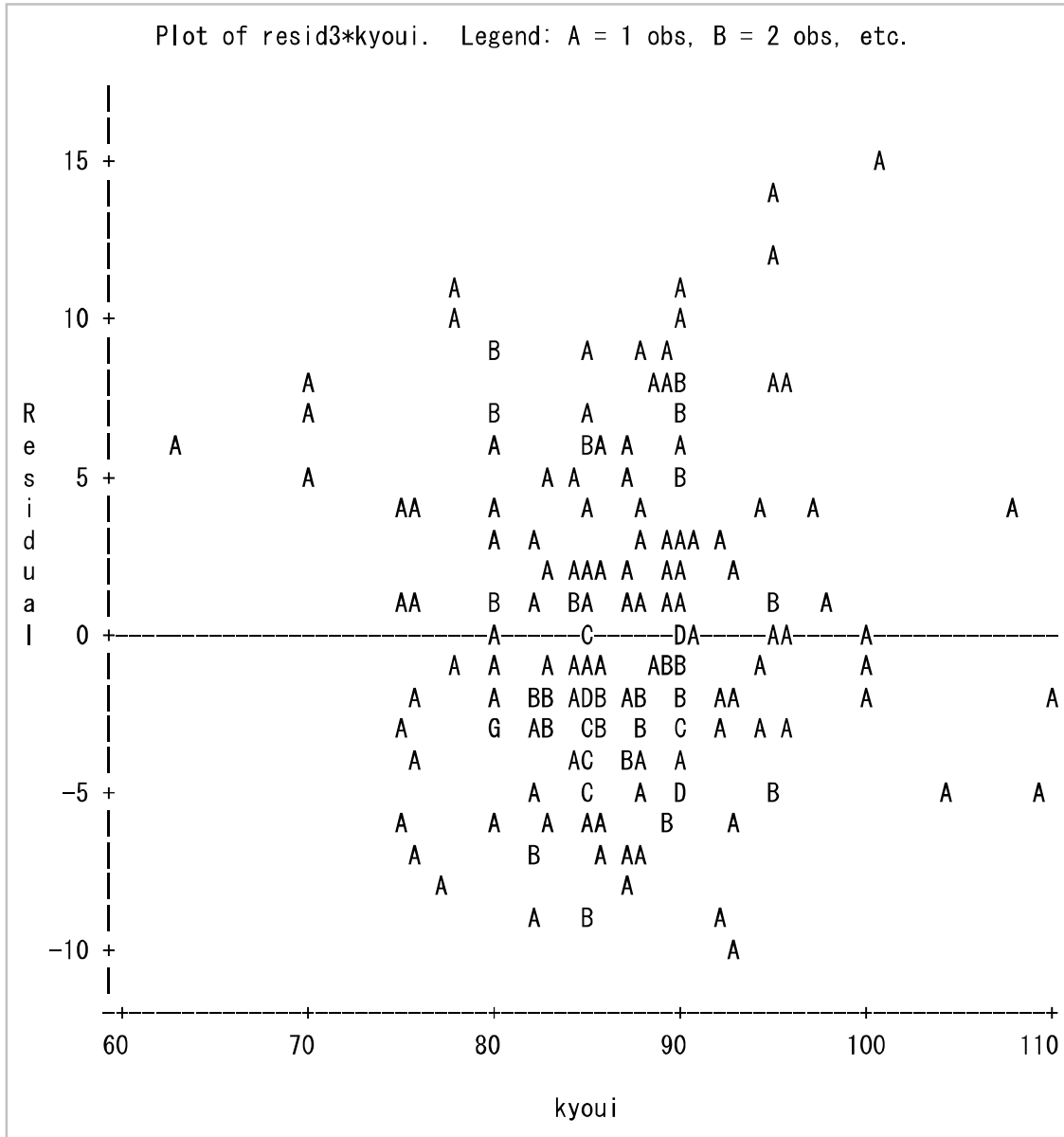
Dependent Variable: taijyuu

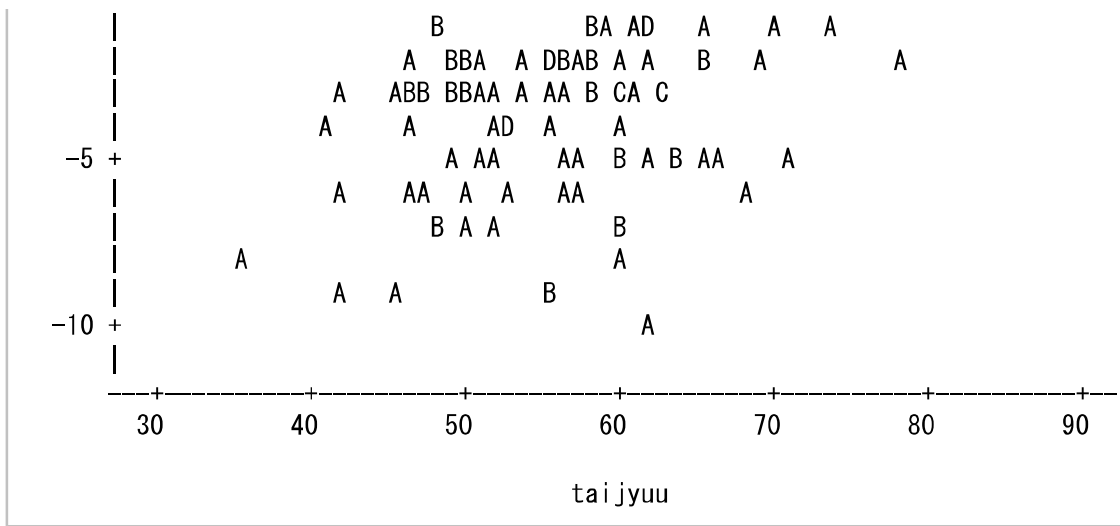


Obs	sex	shintyou	taijyuu	kyoui	jitaku	kodukai	carryer	tsuuwa	pred3	resid3
1	F	145.5	42.0	76	自宅生	0		3700	38.3515	3.6485
2	F	146.7	41.0	85	自宅生	10000	Vodafone	6000	44.9043	-3.9043
3	F	148.0	43.0	80	自宅生	50000	DoCoMo	4000	42.4768	0.5232
4	F	150.0	46.0	86		40000		.	47.5855	-1.5855
5	F	151.7	41.5	80	自宅生	35000		.	44.7589	-3.2589
6	F	152.0	35.0	77	自宅生	60000	DoCoMo	2000	43.0064	-8.0064
7	F	153.0	46.5	87	下宿生	10000		.	50.0817	-3.5817
8	F	153.0	55.0	78	自宅生	30000		.	44.2691	10.7309
9	F	154.4	44.0	75	自宅生	9000	au	2000	43.1950	0.8050
10	F	155.0	48.0	83	下宿生	180000		.	48.7319	-0.7319
11	F	156.0	42.0	85	自宅生	0	DoCoMo	15000	50.6404	-8.6404
12	F	156.0	46.0	82	自宅生	10000	Vodafone	7000	48.7028	-2.7028
13	F	156.0	48.0	70	自宅生	30000		.	40.9526	7.0474
14	F	156.0	49.0	85	自宅生	25000		.	50.6404	-1.6404
15	F	156.0	50.0	82	自宅生	40000	Vodafone	10000	48.7028	1.2972









The UNIVARIATE Procedure
Variable: resid3 (Residual)

Moments			
N	190	Sum Weights	190
Mean	0	Sum Observations	0
Std Deviation	4.97081184	Variance	24.7089703
Skewness	0.53674939	Kurtosis	-0.1695554
Uncorrected SS	4669.99539	Corrected SS	4669.99539
Coeff Variation	.	Std Error Mean	0.36062059

Basic Statistical Measures			
Location		Variability	
Mean	0.00000	Std Deviation	4.97081
Median	-1.00562	Variance	24.70897
Mode	-6.87066	Range	25.16637
		Interquartile Range	6.55433

Note: The mode displayed is the smallest of 7 modes with a count of 2.

Tests for Location: $\mu_0=0$				
Test	Statistic	p Value		
Student's t	t	0	Pr > t	1.0000
Sign	M	-9	Pr >= M	0.2174
Signed Rank	S	-554.5	Pr >= S	0.4665

Tests for Normality				
Test	Statistic	p Value		
Shapiro-Wilk	W	0.971715	Pr < W	0.0007
Kolmogorov-Smirnov	D	0.090494	Pr > D	<0.0100
Cramer-von Mises	W-Sq	0.349275	Pr > W-Sq	<0.0050
Anderson-Darling	A-Sq	1.916759	Pr > A-Sq	<0.0050

Quantiles (Definition 5)	
Level	Quantile
100% Max	14.70601
99%	13.79901
95%	8.86997
90%	7.45505
75% Q3	3.29089
50% Median	-1.00562
25% Q1	-3.26344
10%	-5.71127
5%	-6.99325
1%	-8.84107
0% Min	-10.46036

Extreme Observations			
Lowest		Highest	
Value	Obs	Value	Obs
-10.46036	188	10.7309	8
-8.84107	37	11.4954	111
-8.81405	183	11.7990	141
-8.79630	95	13.7990	142
-8.64036	11	14.7060	113

