

Obs	sex	shintyou	taijyuu	kyoui	jitaku	kodukai	carryer	tsuuwa
1	F	145.0	38.0	.	自宅生	10000		.
2	F	146.7	41.0	85	自宅生	10000	Vodafone	6000
3	F	148.0	42.0	.	自宅生	50000		.
4	F	148.0	43.0	80	自宅生	50000	DoCoMo	4000
5	F	149.0	45.0	.	下宿生	60000		.
6	F	150.0	46.0	86		40000		.
7	F	151.0	45.0	.	自宅生	20000	docomo	5000
8		151.0	46.0	.	自宅生	0		6500
9	F	151.0	50.0	.	下宿生	60000	J-PHONE	.
10	F	151.7	41.5	80	自宅生	35000		.

The REG Procedure  
 Model: MODEL1  
 Dependent Variable: taijyuu

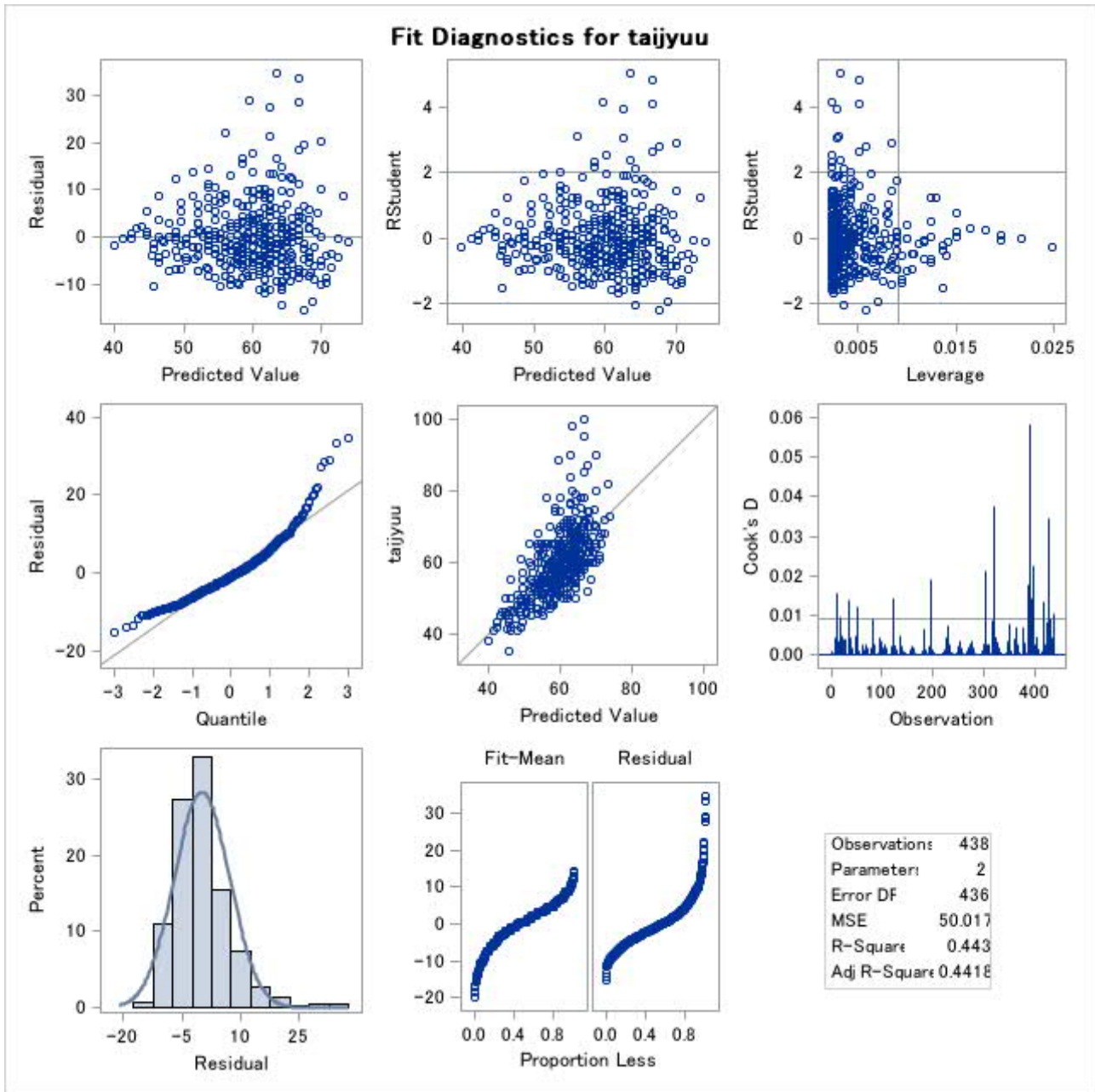
Number of Observations Read	438
Number of Observations Used	438

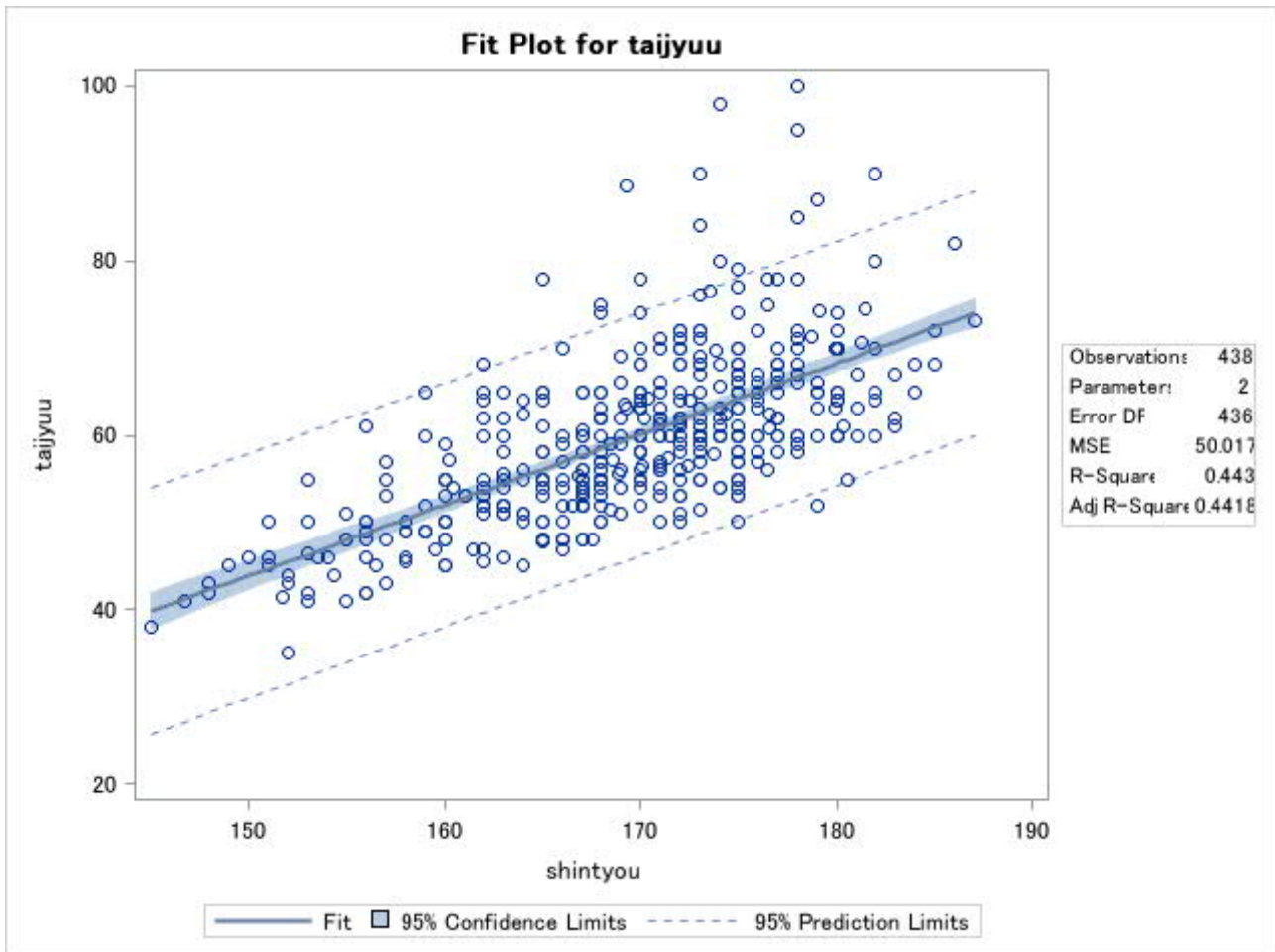
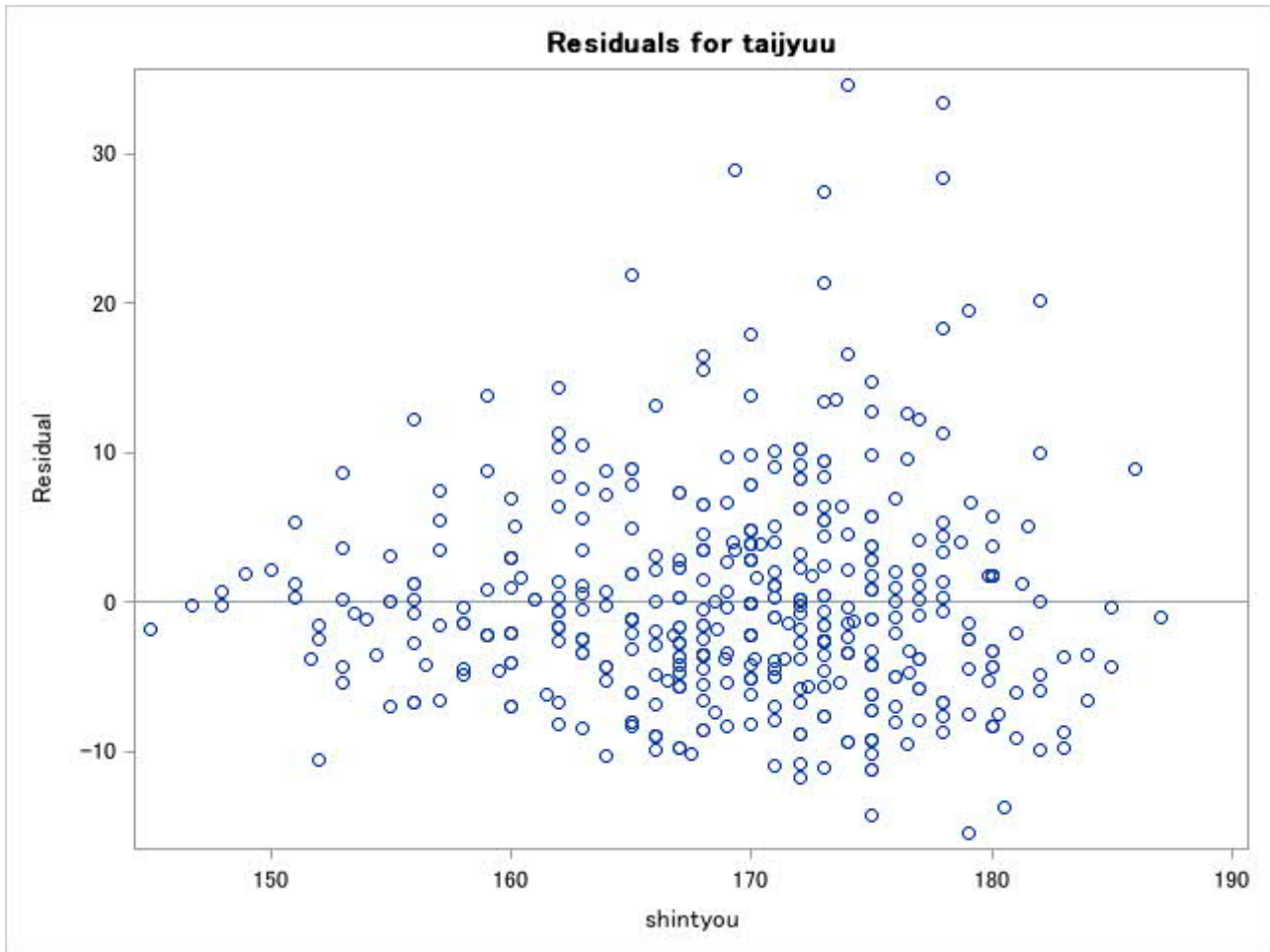
Analysis of Variance					
Source	DF	Sum of Squares	Mean Square	F Value	Pr > F
Model	1	17347	17347	346.83	<.0001
Error	436	21807	50.01691		
Corrected Total	437	39155			

Root MSE	7.07226	R-Square	0.4430
Dependent Mean	59.56621	Adj R-Sq	0.4418
Coeff Var	11.87294		

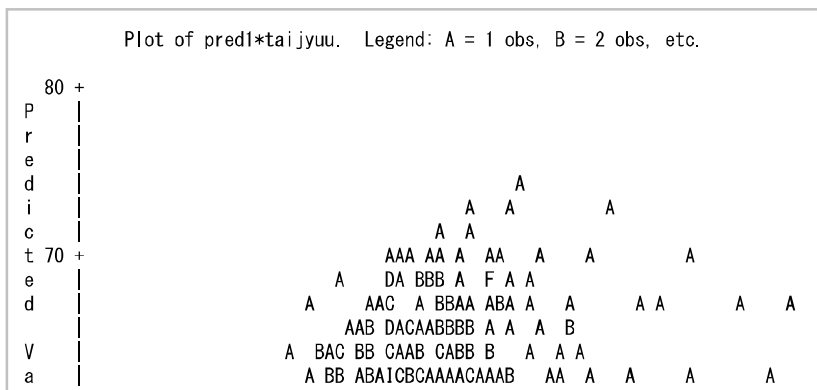
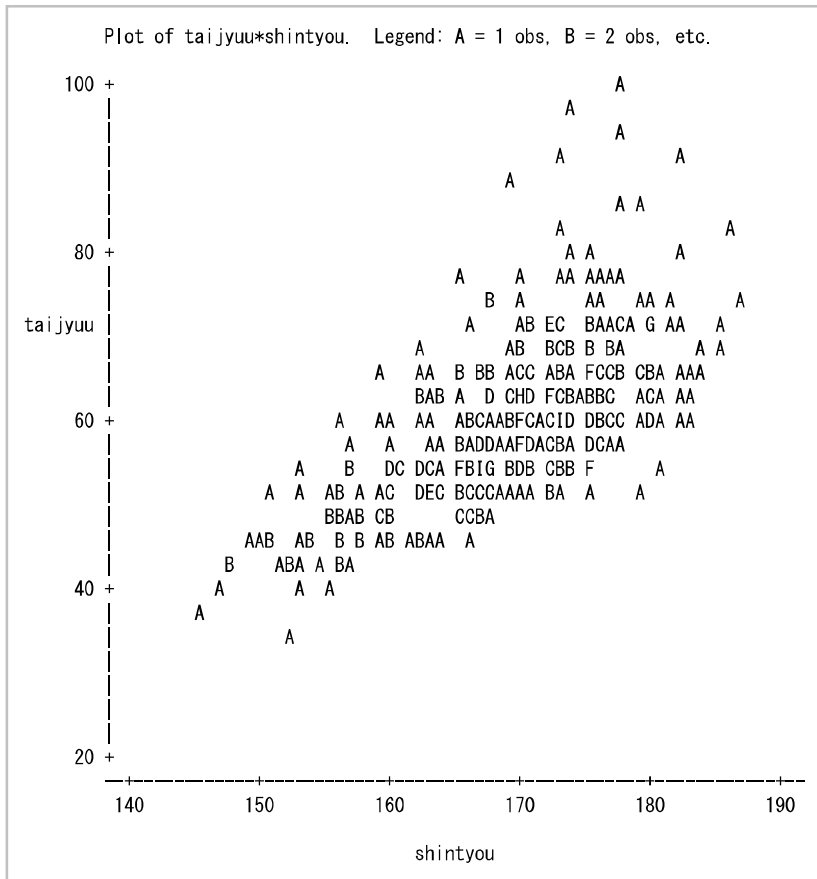
Parameter Estimates					
Variable	DF	Parameter Estimate	Standard Error	t Value	Pr >  t
Intercept	1	-78.02833	7.39601	-10.55	<.0001
shintyou	1	0.81271	0.04364	18.62	<.0001

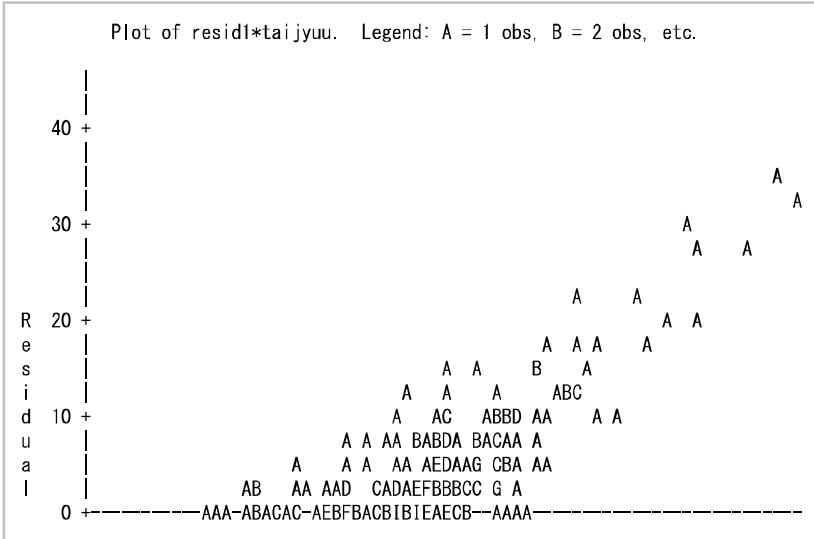
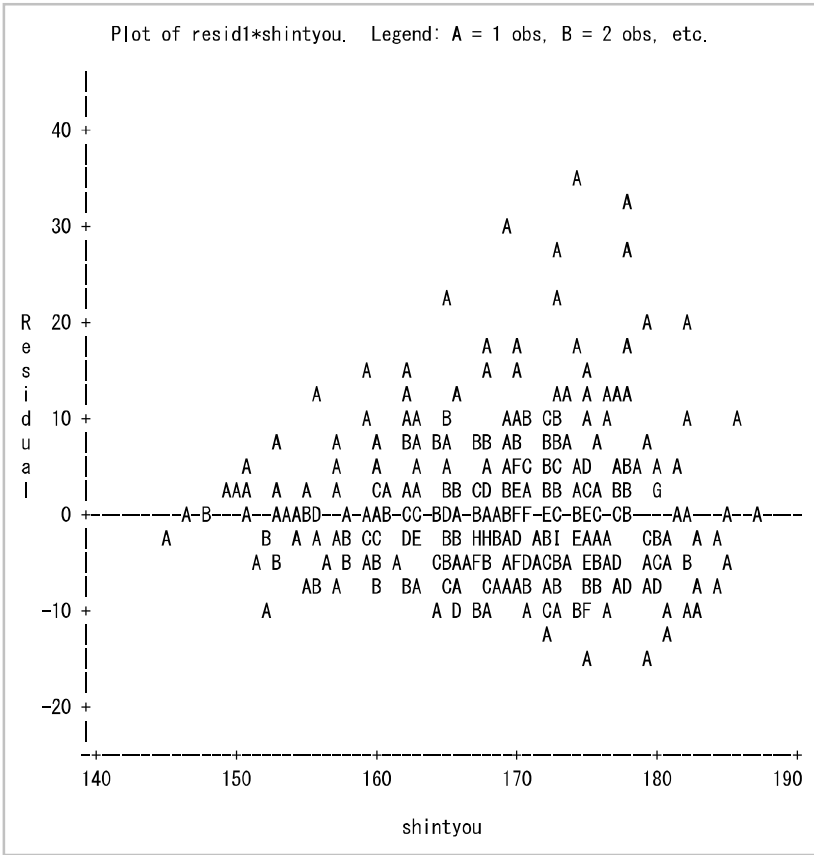
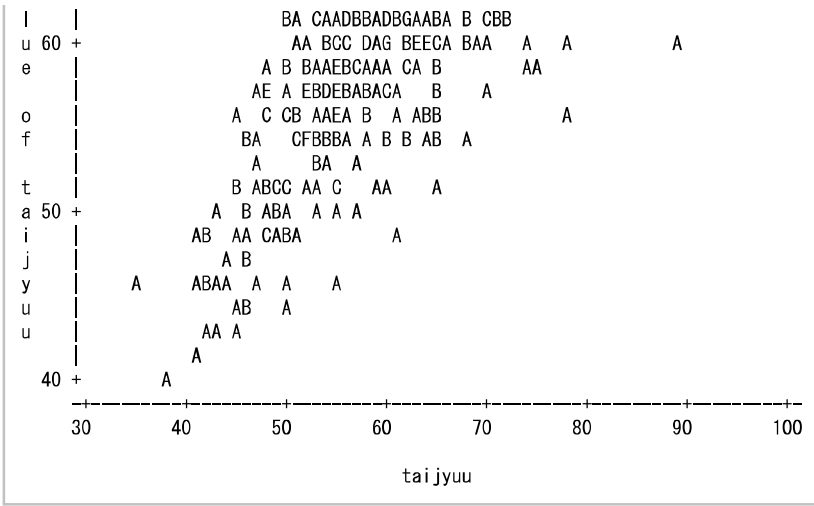
The REG Procedure  
 Model: MODEL1  
 Dependent Variable: taijyuu

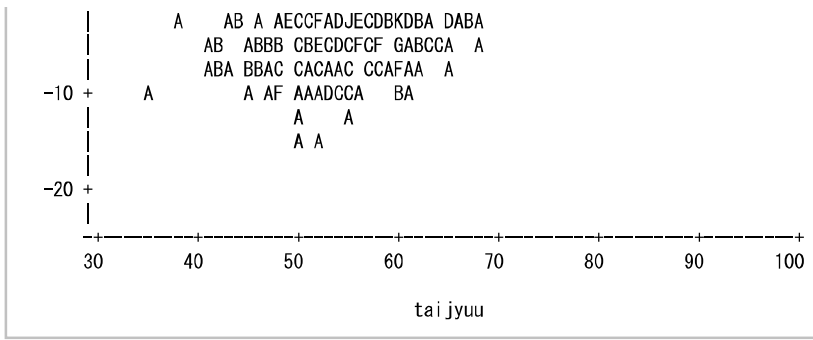




Obs	sex	shintyou	taijyuu	kyoui	jitaku	kodukai	carryer	tsuuwa	pred1	resid1
1	F	145.0	38.0	.	自宅生	10000		.	39.8141	-1.8141
2	F	146.7	41.0	85	自宅生	10000	Vodafone	6000	41.1957	-0.1957
3	F	148.0	42.0	.	自宅生	50000		.	42.2522	-0.2522
4	F	148.0	43.0	80	自宅生	50000	DoCoMo	4000	42.2522	0.7478
5	F	149.0	45.0	.	下宿生	60000		.	43.0649	1.9351
6	F	150.0	46.0	86		40000		.	43.8776	2.1224
7	F	151.0	45.0	.	自宅生	20000	docomo	5000	44.6903	0.3097
8		151.0	46.0	.	自宅生	0		6500	44.6903	1.3097
9	F	151.0	50.0	.	下宿生	60000	J-PHONE	.	44.6903	5.3097
10	F	151.7	41.5	80	自宅生	35000		.	45.2592	-3.7592
11	F	152.0	35.0	77	自宅生	60000	DoCoMo	2000	45.5030	-10.5030
12	F	152.0	43.0	.	自宅生	20000	au	3500	45.5030	-2.5030
13	F	152.0	44.0	.		45000	DoCoMo	4000	45.5030	-1.5030
14	F	153.0	41.0	.	自宅生	125000	No	.	46.3158	-5.3158
15	F	153.0	42.0	.	下宿生	0	Vodafone	1000	46.3158	-4.3158







The UNIVARIATE Procedure  
Variable: resid1 (Residual)

Moments			
N	438	Sum Weights	438
Mean	0	Sum Observations	0
Std Deviation	7.06416668	Variance	49.9024508
Skewness	1.33449894	Kurtosis	3.49025643
Uncorrected SS	21807.371	Corrected SS	21807.371
Coeff Variation	.	Std Error Mean	0.33753894

Basic Statistical Measures			
Location		Variability	
Mean	0.00000	Std Deviation	7.06417
Median	-1.03812	Variance	49.90245
Mode	-2.56988	Range	50.06353
		Interquartile Range	7.68895

Note: The mode displayed is the smallest of 2 modes with a count of 6.

Tests for Location: Mu0=0				
Test	Statistic		p Value	
Student's t	t	0	Pr >  t	1.0000
Sign	M	-29	Pr >=  M	0.0064
Signed Rank	S	-5520.5	Pr >=  S	0.0371

Tests for Normality				
Test	Statistic		p Value	
Shapiro-Wilk	W	0.923698	Pr < W	<0.0001
Kolmogorov-Smirnov	D	0.08988	Pr > D	<0.0100
Cramer-von Mises	W-Sq	1.00375	Pr > W-Sq	<0.0050
Anderson-Darling	A-Sq	6.107932	Pr > A-Sq	<0.0050

Quantiles (Definition 5)	
Level	Quantile
100% Max	34.61741
99%	27.43012
95%	12.80470
90%	8.86493
75% Q3	3.24282
50% Median	-1.03812
25% Q1	-4.44612
10%	-8.06823
5%	-9.19530
1%	-11.19530

Quantiles (Definition 5)	
Level	Quantile
0% Min	-15.44612

Extreme Observations			
Lowest		Highest	
Value	Obs	Value	Obs
-15.4461	393	27.4301	304
-14.1953	321	28.3666	390
-13.6652	418	28.9371	197
-11.7572	252	33.3666	391
-11.1953	323	34.6174	319

