

Obs	sex	shintyou	taijyuu	kyoui	jitaku	kodukai	carryer	tsuuwa
1	F	145.0	38	.	J	10000		.
2	F	146.7	41	85	J	10000	Vodafone	6000
3	F	148.0	42	.	J	50000		.
4	F	148.0	43	80	J	50000	DoCoMo	4000
5	F	149.0	45	.	G	60000		.

The UNIVARIATE Procedure
Variable: shintyou

sex=F

Moments			
N	83	Sum Weights	83
Mean	158.510843	Sum Observations	13156.4
Std Deviation	5.40807914	Variance	29.24732
Skewness	-0.2949921	Kurtosis	-0.5527075
Uncorrected SS	2087830.34	Corrected SS	2398.28024
Coeff Variation	3.4118039	Std Error Mean	0.59361381

Basic Statistical Measures			
Location		Variability	
Mean	158.5108	Std Deviation	5.40808
Median	159.0000	Variance	29.24732
Mode	156.0000	Range	23.00000
		Interquartile Range	7.00000

Note: The mode displayed is the smallest of 3 modes with a count of 7.

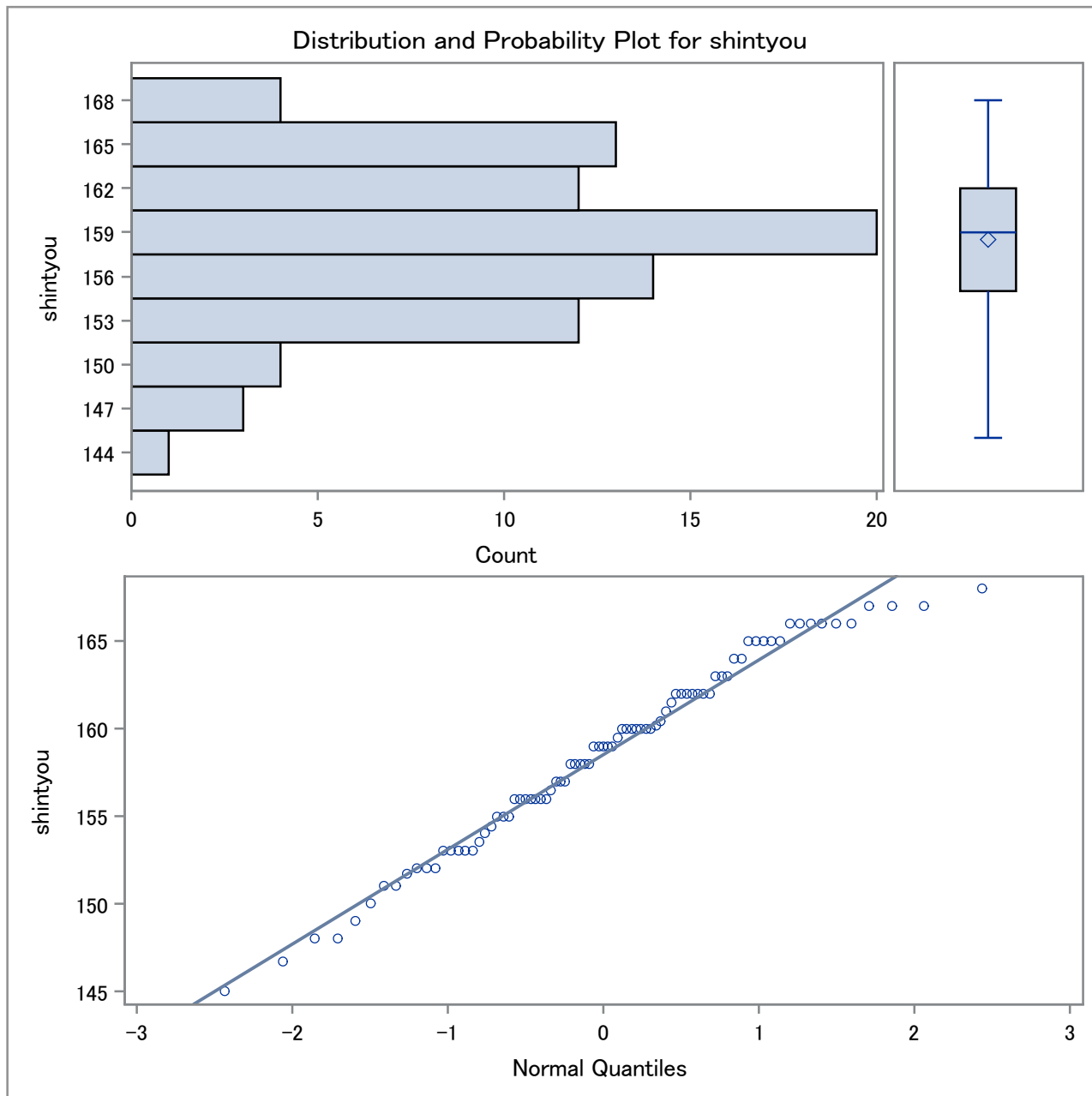
Tests for Location: $\mu_0=0$				
Test	Statistic		p Value	
Student's t	t	267.0269	Pr > t	<.0001
Sign	M	41.5	Pr >= M	<.0001
Signed Rank	S	1743	Pr >= S	<.0001

Quantiles (Definition 5)	
Level	Quantile
100% Max	168.0
99%	168.0
95%	166.0
90%	166.0
75% Q3	162.0
50% Median	159.0
25% Q1	155.0
10%	151.7
5%	149.0
1%	145.0
0% Min	145.0

The UNIVARIATE Procedure
Variable: shintyou

sex=F

Extreme Observations			
Lowest		Highest	
Value	Obs	Value	Obs
145.0	1	166	79
146.7	2	167	80
148.0	4	167	81
148.0	3	167	82
149.0	5	168	83



The UNIVARIATE Procedure
Variable: tajjyuu

sex=F

Moments			
N	83	Sum Weights	83
Mean	48.6987952	Sum Observations	4042
Std Deviation	4.72299755	Variance	22.3067058
Skewness	-0.1154676	Kurtosis	0.2317718
Uncorrected SS	198669.68	Corrected SS	1829.14988
Coeff Variation	9.69838685	Std Error Mean	0.51841633

Basic Statistical Measures			
Location		Variability	
Mean	48.69880	Std Deviation	4.72300
Median	49.00000	Variance	22.30671
Mode	50.00000	Range	25.00000
		Interquartile Range	6.50000

Tests for Location: Mu0=0				
Test	Statistic		p Value	
Student's t	t	93.93762	Pr > t	<.0001
Sign	M	41.5	Pr >= M	<.0001
Signed Rank	S	1743	Pr >= S	<.0001

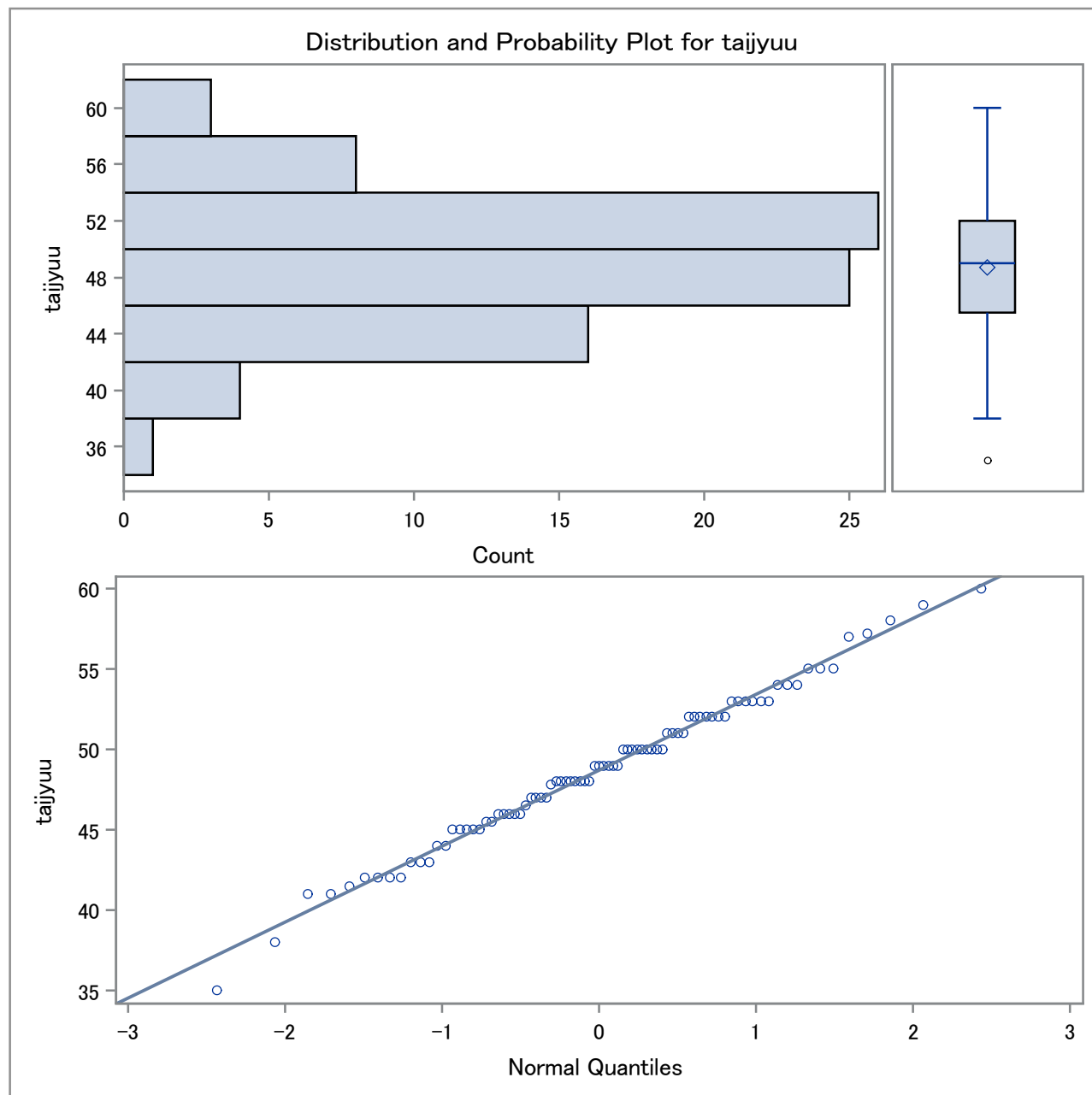
Quantiles (Definition 5)	
Level	Quantile
100% Max	60.0
99%	60.0
95%	57.0
90%	54.0
75% Q3	52.0
50% Median	49.0
25% Q1	45.5
10%	42.0
5%	41.5
1%	35.0
0% Min	35.0

Extreme Observations			
Lowest		Highest	
Value	Obs	Value	Obs
35.0	10	57.0	34
38.0	1	57.2	53
41.0	13	58.0	73

The UNIVARIATE Procedure
Variable: tajjyuu

sex=F

Extreme Observations			
Lowest		Highest	
Value	Obs	Value	Obs
41.0	2	59.0	52
41.5	9	60.0	44



The UNIVARIATE Procedure
Variable: kyoui

sex=F

Moments			
N	43	Sum Weights	43
Mean	83	Sum Observations	3569
Std Deviation	3.90360029	Variance	15.2380952
Skewness	-1.130933	Kurtosis	2.06569193
Uncorrected SS	296867	Corrected SS	640
Coeff Variation	4.70313288	Std Error Mean	0.59529346

Basic Statistical Measures			
Location		Variability	
Mean	83.00000	Std Deviation	3.90360
Median	84.00000	Variance	15.23810
Mode	85.00000	Range	20.00000
		Interquartile Range	5.00000

Tests for Location: Mu0=0				
Test	Statistic		p Value	
Student's t	t	139.427	Pr > t	<.0001
Sign	M	21.5	Pr >= M	<.0001
Signed Rank	S	473	Pr >= S	<.0001

Quantiles (Definition 5)	
Level	Quantile
100% Max	90
99%	90
95%	88
90%	87
75% Q3	85
50% Median	84
25% Q1	80
10%	78
5%	75
1%	70
0% Min	70

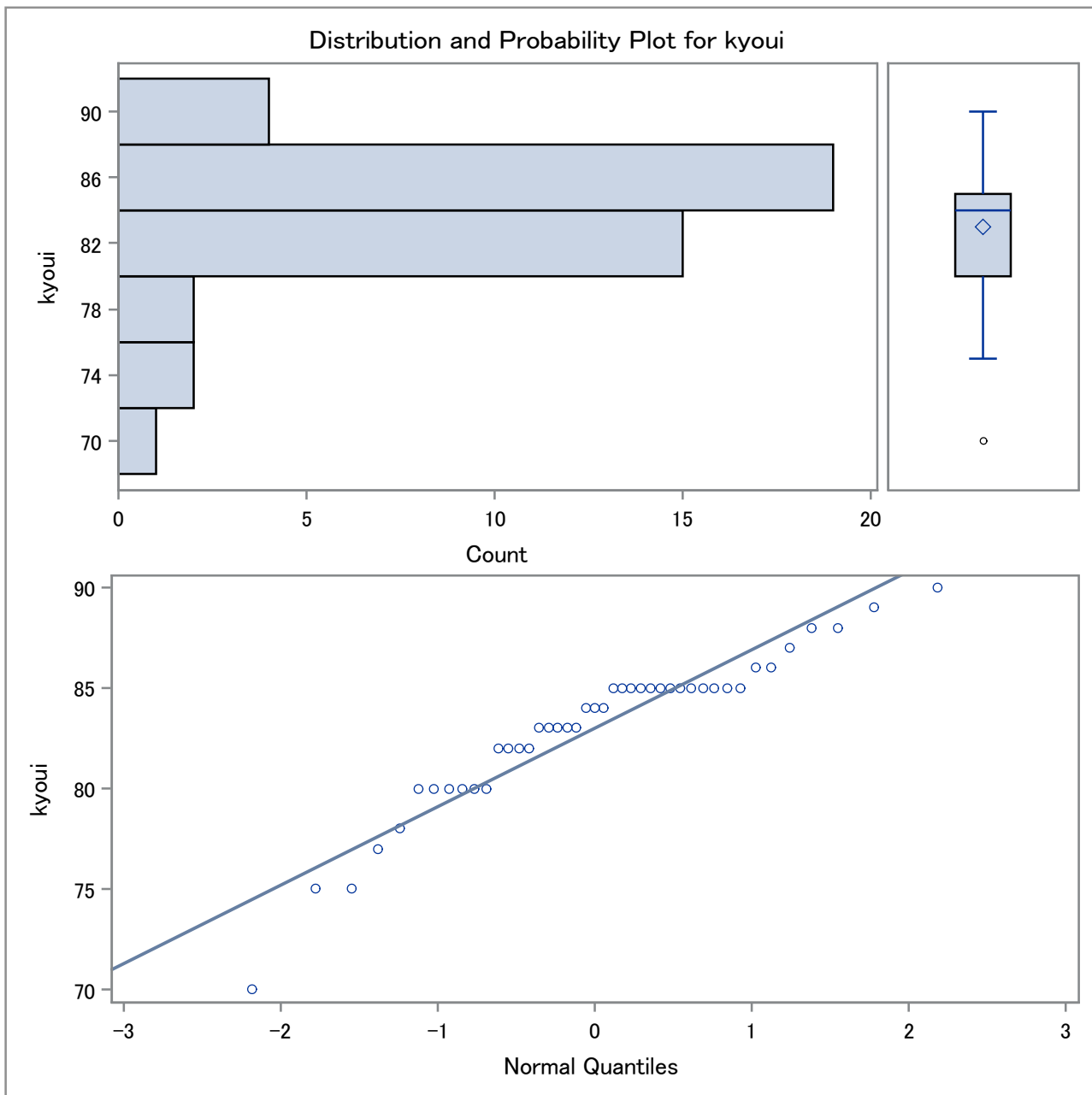
Extreme Observations			
Lowest		Highest	
Value	Obs	Value	Obs
70	27	87	15
75	74	88	42
75	20	88	52

The UNIVARIATE Procedure
Variable: kyoui

sex=F

Extreme Observations			
Lowest		Highest	
Value	Obs	Value	Obs
77	10	89	50
78	17	90	66

Missing Values			
Missing Value	Count	Percent Of	
		All Obs	Missing Obs
.	40	48.19	100.00



The UNIVARIATE Procedure
Variable: kodukai

sex=F

Moments			
N	78	Sum Weights	78
Mean	49314.1026	Sum Observations	3846500
Std Deviation	48483.5699	Variance	2350656552
Skewness	2.6050881	Kurtosis	9.65378971
Uncorrected SS	3.70687E11	Corrected SS	1.81001E11
Coeff Variation	98.3158314	Std Error Mean	5489.68327

Basic Statistical Measures			
Location		Variability	
Mean	49314.10	Std Deviation	48484
Median	37500.00	Variance	2350656552
Mode	30000.00	Range	300000
		Interquartile Range	40000

Tests for Location: Mu0=0				
Test	Statistic		p Value	
Student's t	t	8.983051	Pr > t	<.0001
Sign	M	35	Pr >= M	<.0001
Signed Rank	S	1242.5	Pr >= S	<.0001

Quantiles (Definition 5)	
Level	Quantile
100% Max	300000
99%	300000
95%	150000
90%	100000
75% Q3	60000
50% Median	37500
25% Q1	20000
10%	0
5%	0
1%	0
0% Min	0

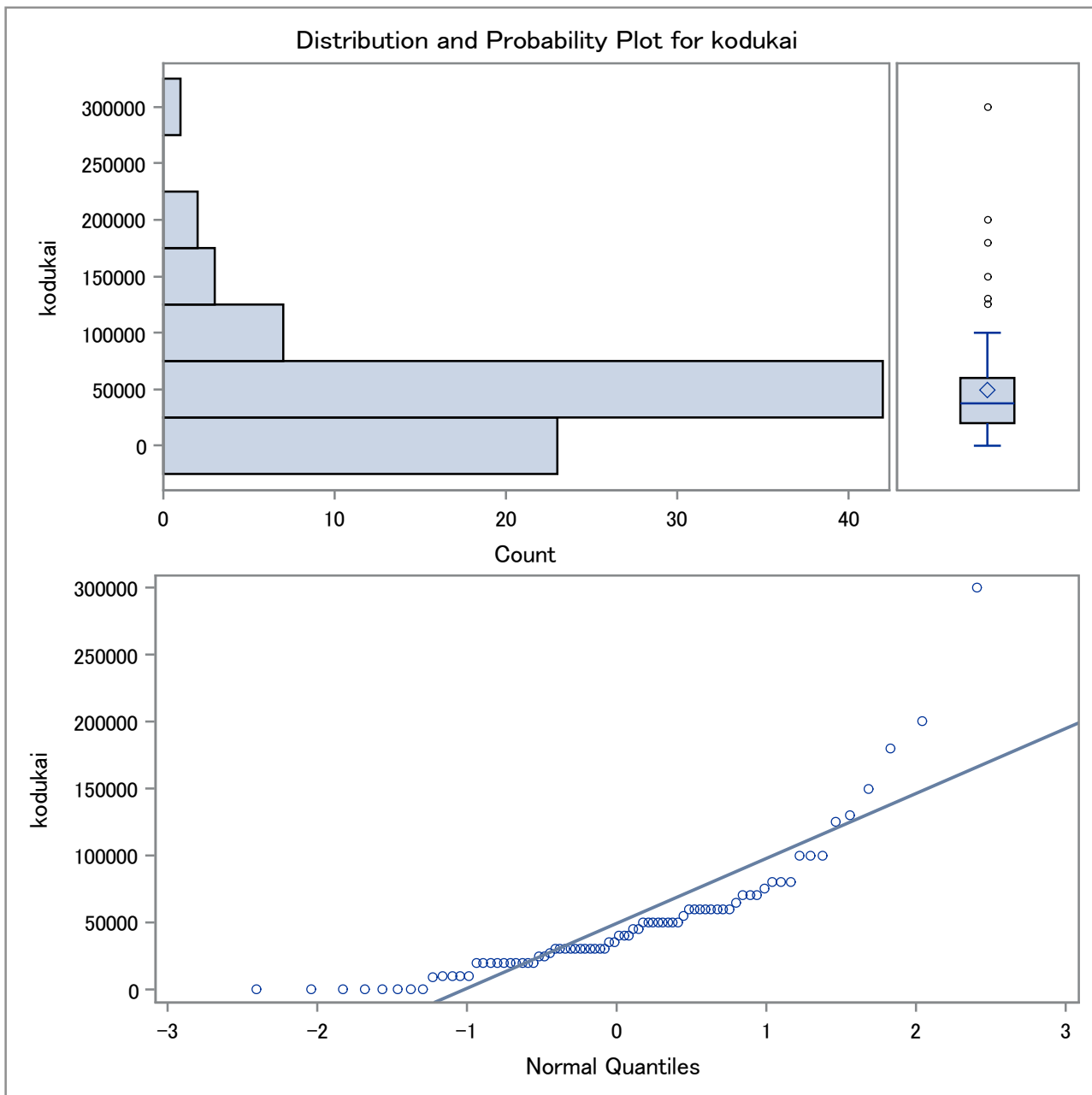
Extreme Observations			
Lowest		Highest	
Value	Obs	Value	Obs
0	79	130000	81
0	70	150000	48
0	47	180000	21

The UNIVARIATE Procedure
Variable: kodukai

sex=F

Extreme Observations			
Lowest		Highest	
Value	Obs	Value	Obs
0	46	200000	58
0	41	300000	76

Missing Values			
Missing Value	Count	Percent Of	
		All Obs	Missing Obs
.	5	6.02	100.00



The UNIVARIATE Procedure
Variable: shintyou

sex=M

Moments			
N	242	Sum Weights	242
Mean	172.187603	Sum Observations	41669.4
Std Deviation	5.39094169	Variance	29.0622523
Skewness	-0.0830809	Kurtosis	0.16313224
Uncorrected SS	7181958.12	Corrected SS	7004.00281
Coeff Variation	3.13085355	Std Error Mean	0.34654286

Basic Statistical Measures			
Location		Variability	
Mean	172.1876	Std Deviation	5.39094
Median	172.0000	Variance	29.06225
Mode	170.0000	Range	30.00000
		Interquartile Range	6.00000

Tests for Location: Mu0=0				
Test	Statistic		p Value	
Student's t	t	496.8725	Pr > t	<.0001
Sign	M	121	Pr >= M	<.0001
Signed Rank	S	14701.5	Pr >= S	<.0001

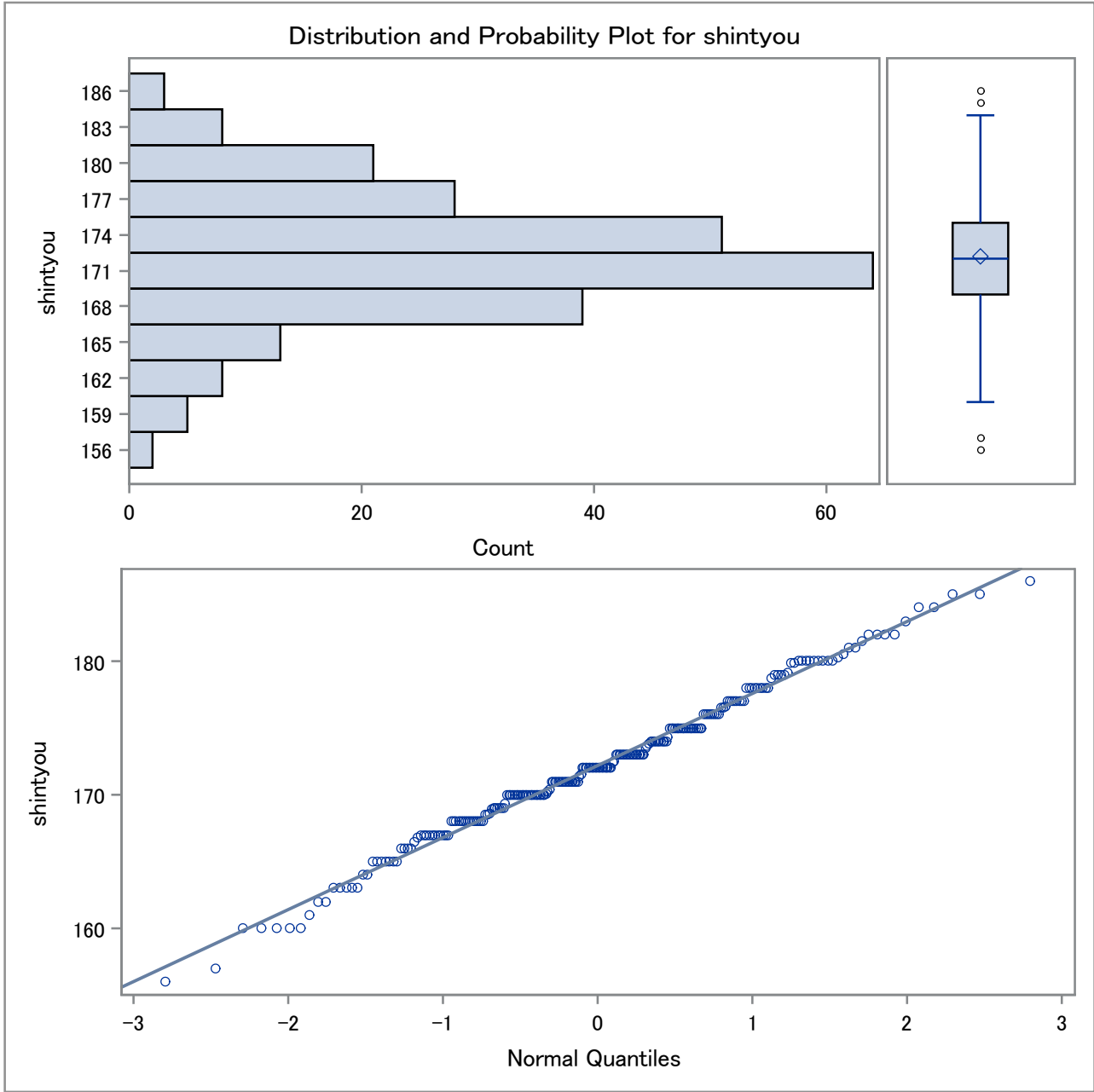
Quantiles (Definition 5)	
Level	Quantile
100% Max	186.0
99%	185.0
95%	181.0
90%	179.9
75% Q3	175.0
50% Median	172.0
25% Q1	169.0
10%	166.0
5%	163.0
1%	160.0
0% Min	156.0

Extreme Observations			
Lowest		Highest	
Value	Obs	Value	Obs
156	84	184	321
157	85	184	322
160	90	185	323

The UNIVARIATE Procedure
Variable: shintyou

sex=M

Extreme Observations			
Lowest		Highest	
Value	Obs	Value	Obs
160	89	185	324
160	88	186	325



The UNIVARIATE Procedure
Variable: tajjyuu

sex=M

Moments			
N	242	Sum Weights	242
Mean	62.238843	Sum Observations	15061.8
Std Deviation	7.92773766	Variance	62.8490244
Skewness	1.25956203	Kurtosis	3.31622437
Uncorrected SS	952575.62	Corrected SS	15146.6149
Coeff Variation	12.7376045	Std Error Mean	0.50961428

Basic Statistical Measures			
Location		Variability	
Mean	62.23884	Std Deviation	7.92774
Median	61.00000	Variance	62.84902
Mode	60.00000	Range	54.00000
		Interquartile Range	9.00000

Tests for Location: Mu0=0				
Test	Statistic		p Value	
Student's t	t	122.1293	Pr > t	<.0001
Sign	M	121	Pr >= M	<.0001
Signed Rank	S	14701.5	Pr >= S	<.0001

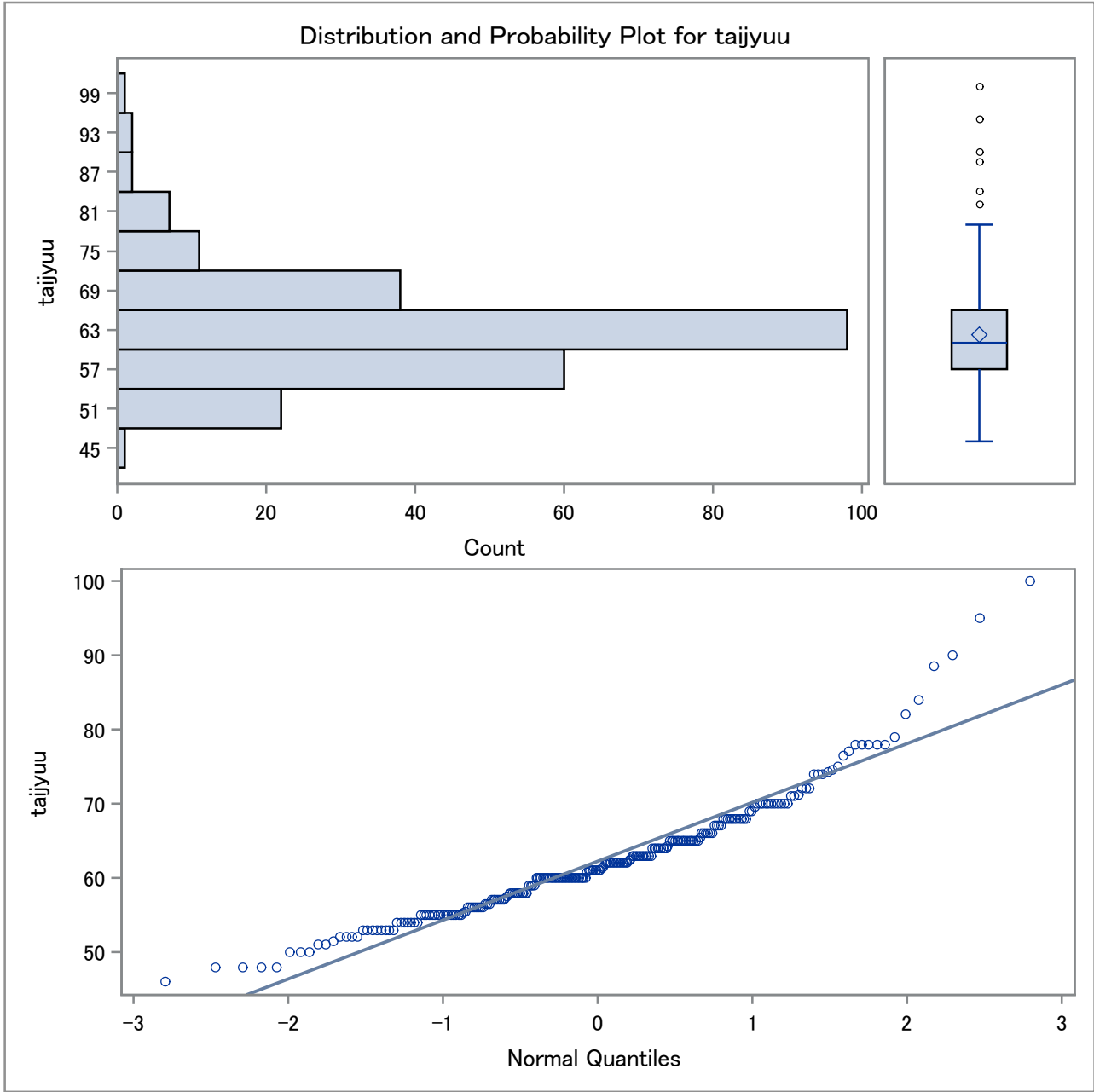
Quantiles (Definition 5)	
Level	Quantile
100% Max	100
99%	90
95%	77
90%	71
75% Q3	66
50% Median	61
25% Q1	57
10%	54
5%	52
1%	48
0% Min	46

Extreme Observations			
Lowest		Highest	
Value	Obs	Value	Obs
46	94	84.0	233
48	114	88.5	150
48	87	90.0	319

The UNIVARIATE Procedure
Variable: tajjyuu

sex=M

Extreme Observations			
Lowest		Highest	
Value	Obs	Value	Obs
48	86	95.0	292
48	85	100.0	293



The UNIVARIATE Procedure
Variable: kyoui

sex=M

Moments			
N	71	Sum Weights	71
Mean	88.0985915	Sum Observations	6255
Std Deviation	9.68526853	Variance	93.8044266
Skewness	-1.3877062	Kurtosis	5.91724718
Uncorrected SS	557623	Corrected SS	6566.30986
Coeff Variation	10.9936701	Std Error Mean	1.1494299

Basic Statistical Measures			
Location		Variability	
Mean	88.09859	Std Deviation	9.68527
Median	90.00000	Variance	93.80443
Mode	90.00000	Range	66.00000
		Interquartile Range	8.00000

Tests for Location: Mu0=0				
Test	Statistic		p Value	
Student's t	t	76.64547	Pr > t	<.0001
Sign	M	35.5	Pr >= M	<.0001
Signed Rank	S	1278	Pr >= S	<.0001

Quantiles (Definition 5)	
Level	Quantile
100% Max	112
99%	112
95%	100
90%	96
75% Q3	93
50% Median	90
25% Q1	85
10%	80
5%	75
1%	46
0% Min	46

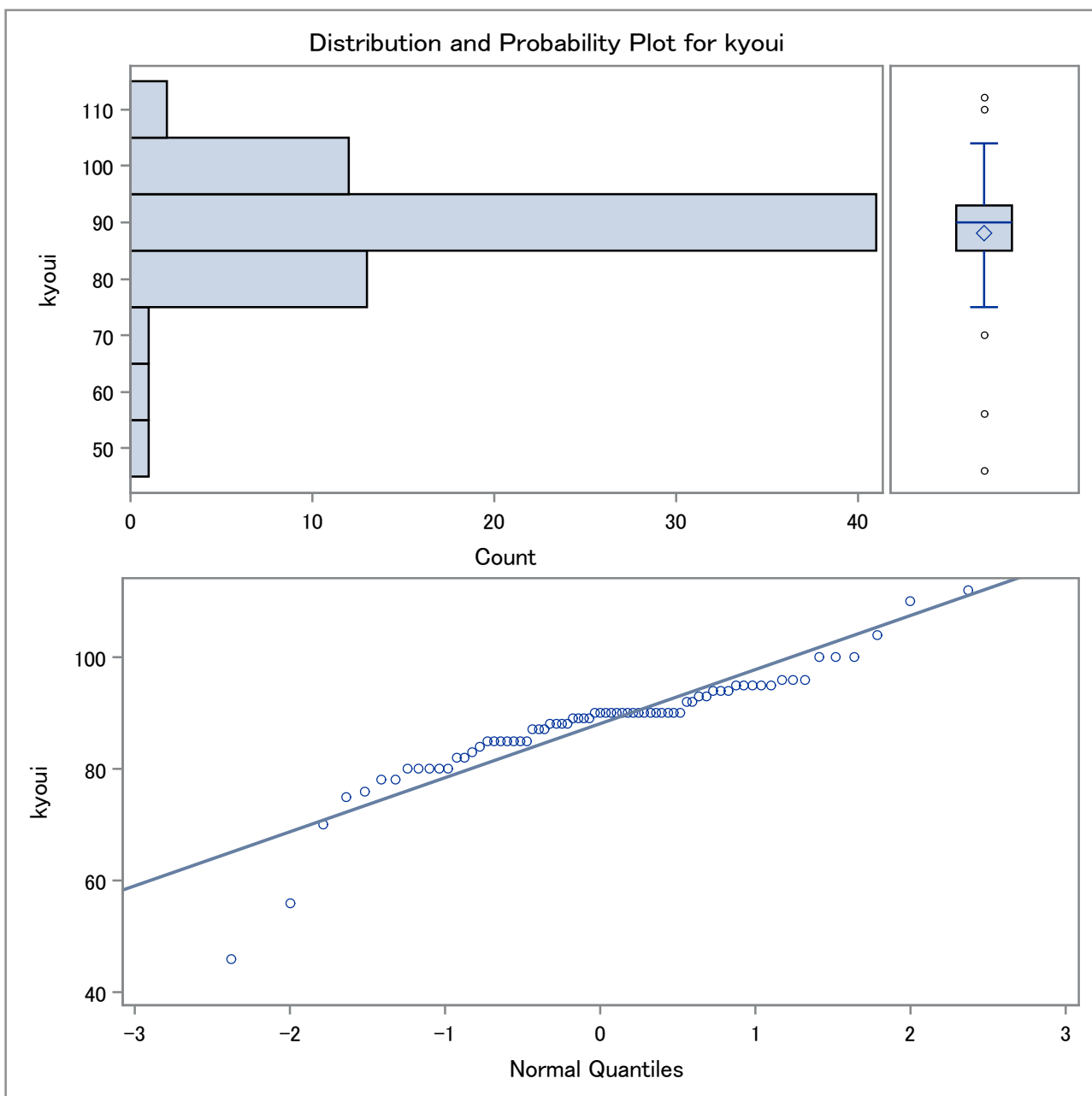
Extreme Observations			
Lowest		Highest	
Value	Obs	Value	Obs
46	233	100	232
56	127	100	319
70	152	104	137

The UNIVARIATE Procedure
Variable: kyoui

sex=M

Extreme Observations			
Lowest		Highest	
Value	Obs	Value	Obs
75	145	110	291
76	86	112	293

Missing Values			
Missing Value	Count	Percent Of	
		All Obs	Missing Obs
.	171	70.66	100.00



The UNIVARIATE Procedure
Variable: kodukai

sex=M

Moments			
N	229	Sum Weights	229
Mean	48620.0873	Sum Observations	11134000
Std Deviation	52676.9344	Variance	2774859419
Skewness	1.96523697	Kurtosis	6.0201031
Uncorrected SS	1.174E12	Corrected SS	6.32668E11
Coeff Variation	108.343973	Std Error Mean	3480.98981

Basic Statistical Measures			
Location		Variability	
Mean	48620.09	Std Deviation	52677
Median	30000.00	Variance	2774859419
Mode	0.00	Range	350000
		Interquartile Range	60000

Tests for Location: Mu0=0				
Test	Statistic		p Value	
Student's t	t	13.96732	Pr > t	<.0001
Sign	M	93	Pr >= M	<.0001
Signed Rank	S	8695.5	Pr >= S	<.0001

Quantiles (Definition 5)	
Level	Quantile
100% Max	350000
99%	200000
95%	150000
90%	120000
75% Q3	70000
50% Median	30000
25% Q1	10000
10%	0
5%	0
1%	0
0% Min	0

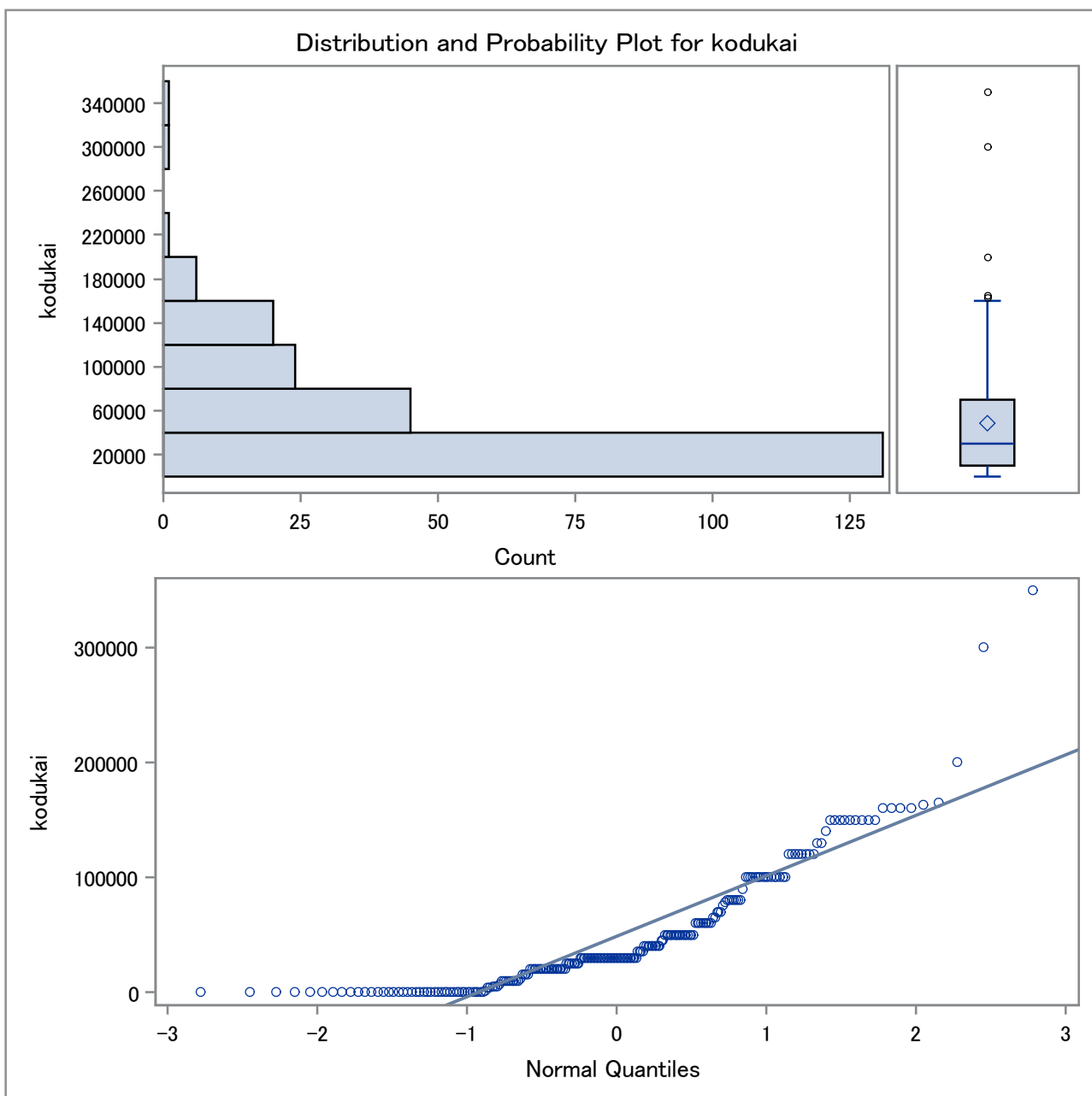
Extreme Observations			
Lowest		Highest	
Value	Obs	Value	Obs
0	325	163000	155
0	323	165000	185
0	317	200000	221

The UNIVARIATE Procedure
Variable: kodukai

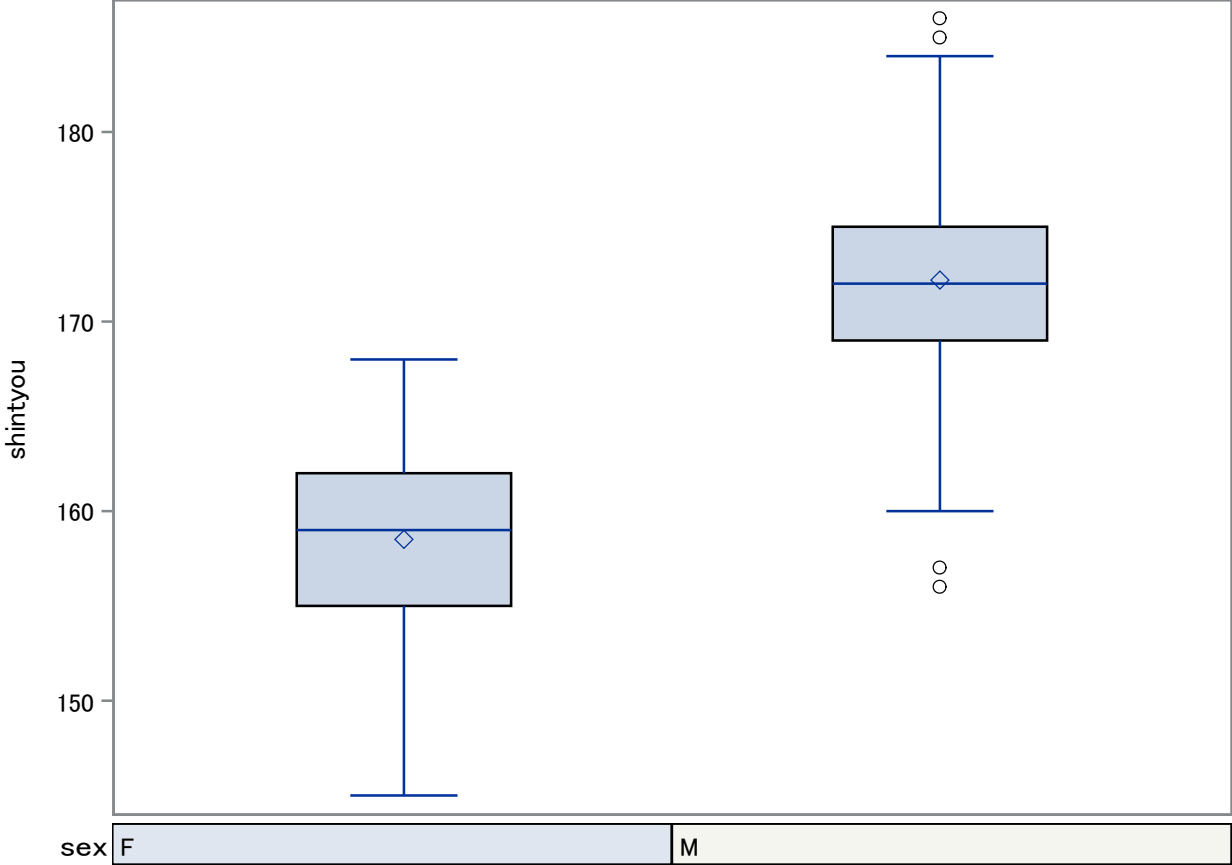
sex=M

Extreme Observations			
Lowest		Highest	
Value	Obs	Value	Obs
0	314	300000	295
0	312	350000	233

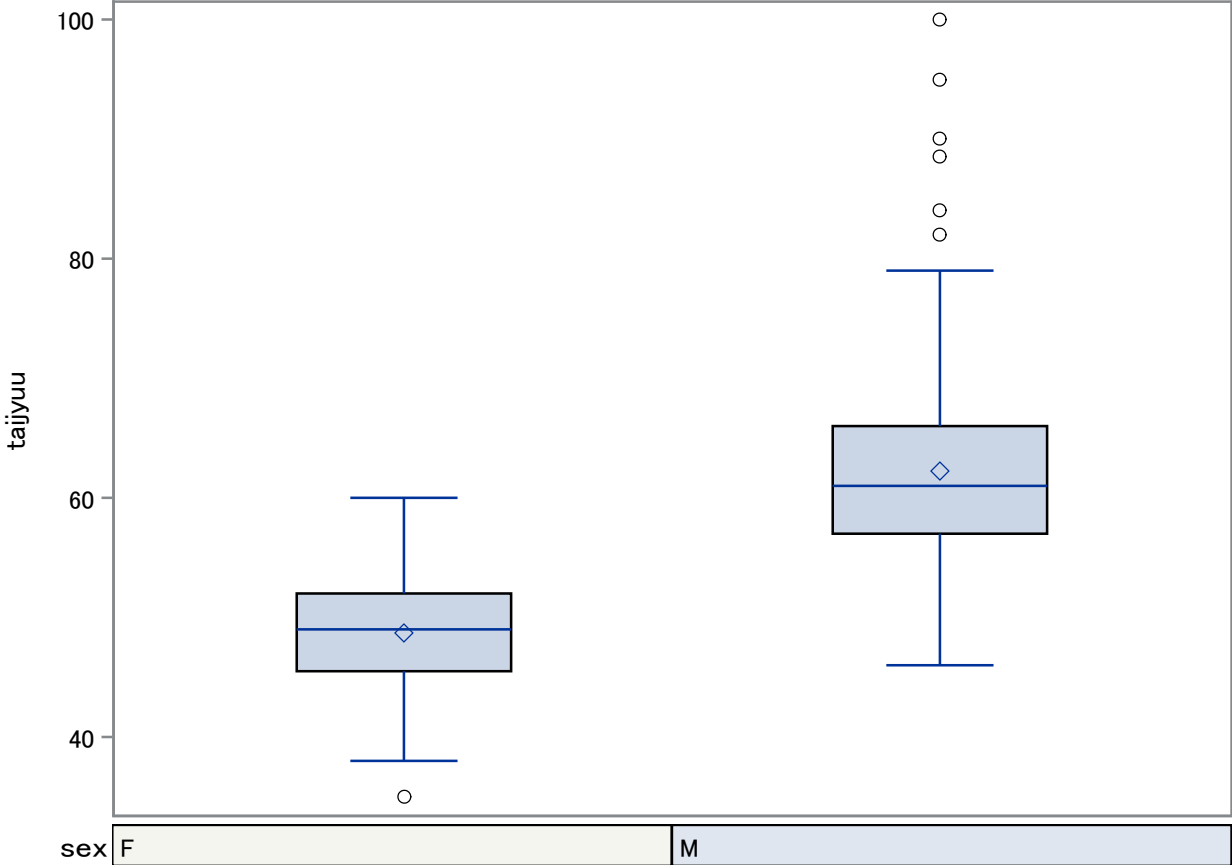
Missing Values			
Missing Value	Count	Percent Of	
		All Obs	Missing Obs
.	13	5.37	100.00



Distribution of shintyou by BY Group

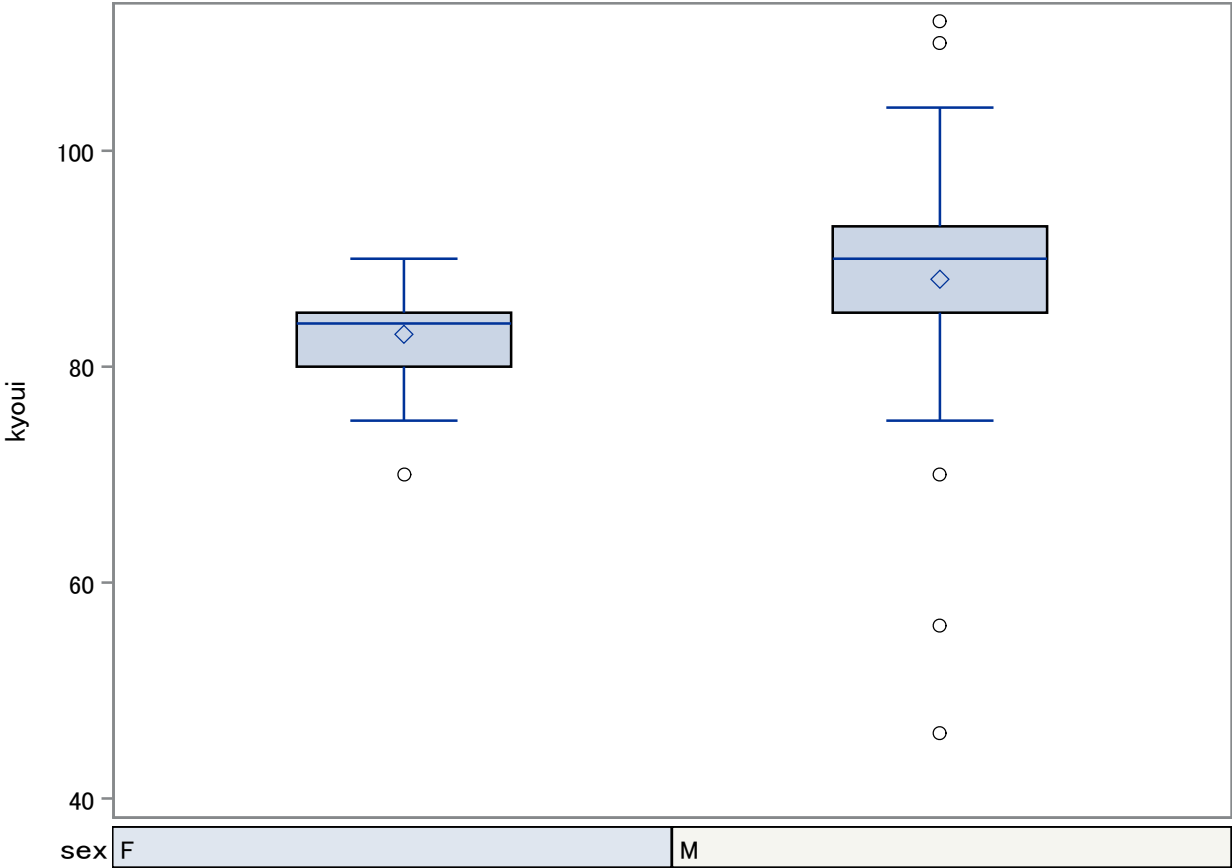


Distribution of tajyuu by BY Group

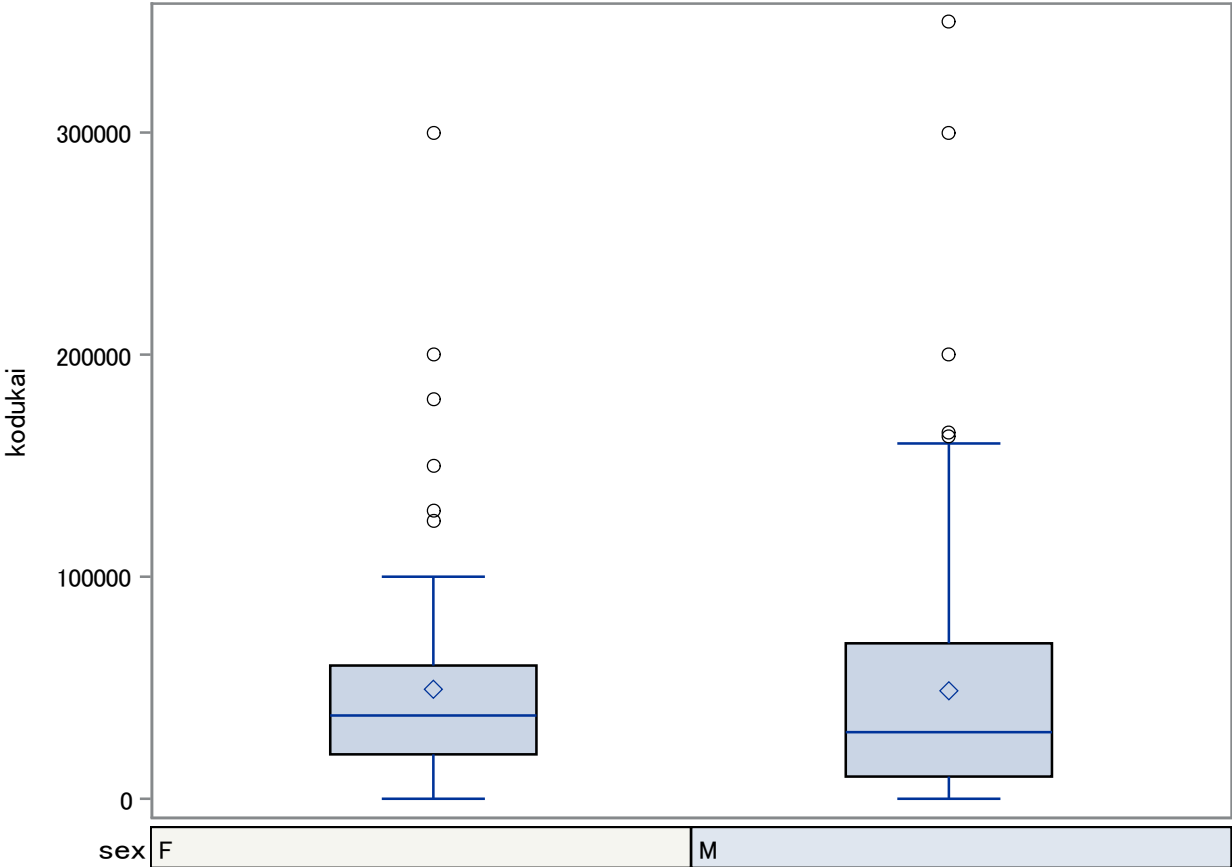


The UNIVARIATE Procedure

Distribution of kyoui by BY Group



Distribution of kodukai by BY Group



The TTEST Procedure

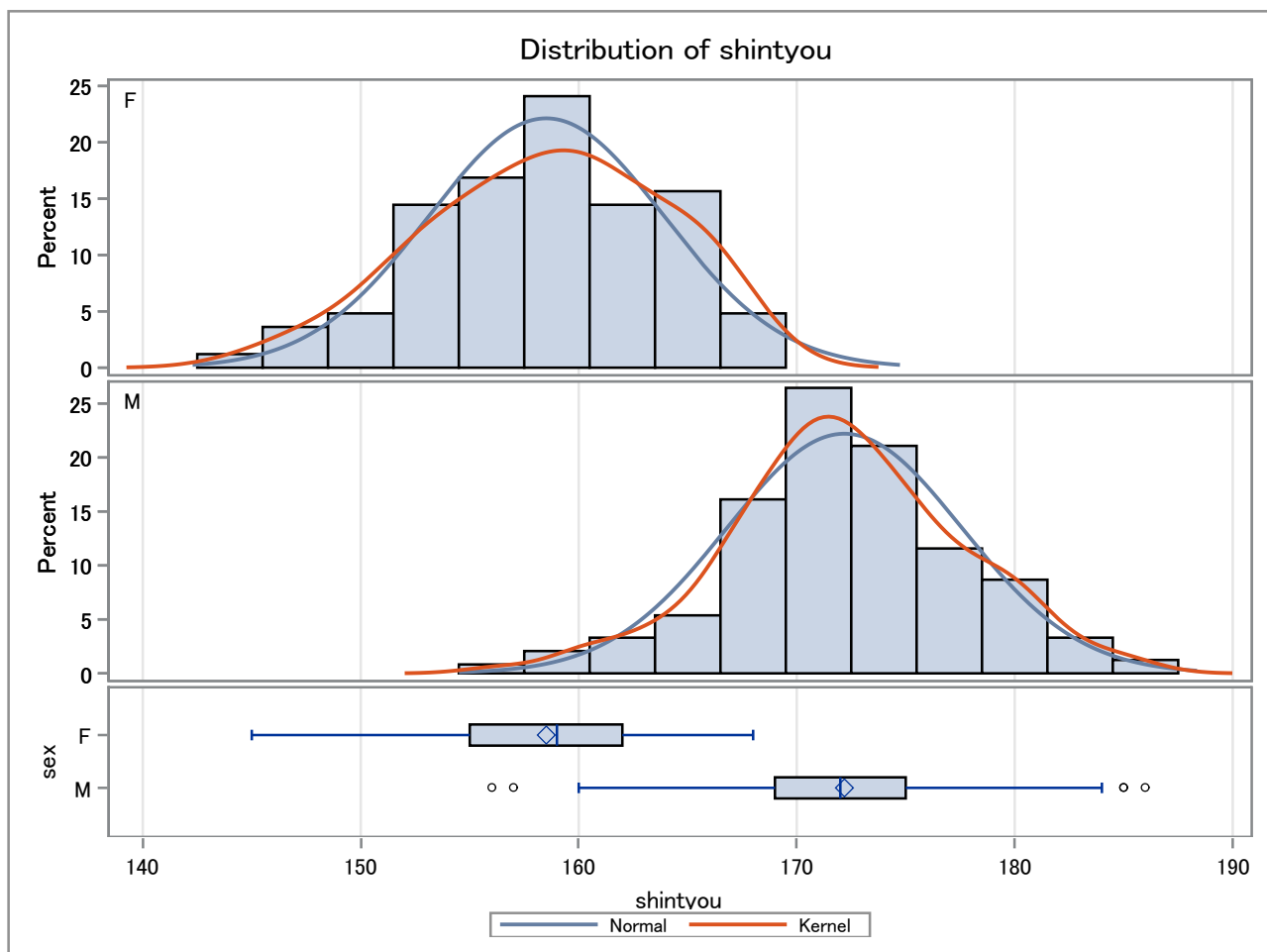
Variable: shintyou

sex	Method	N	Mean	Std Dev	Std Err	Minimum	Maximum
F		83	158.5	5.4081	0.5936	145.0	168.0
M		242	172.2	5.3909	0.3465	156.0	186.0
Diff (1-2)	Pooled		-13.6768	5.3953	0.6863		
Diff (1-2)	Satterthwaite		-13.6768		0.6874		

sex	Method	Mean	95% CL Mean		Std Dev	95% CL Std Dev	
F		158.5	157.3	159.7	5.4081	4.6920	6.3841
M		172.2	171.5	172.9	5.3909	4.9496	5.9193
Diff (1-2)	Pooled	-13.6768	-15.0269	-12.3266	5.3953	5.0094	5.8461
Diff (1-2)	Satterthwaite	-13.6768	-15.0356	-12.3180			

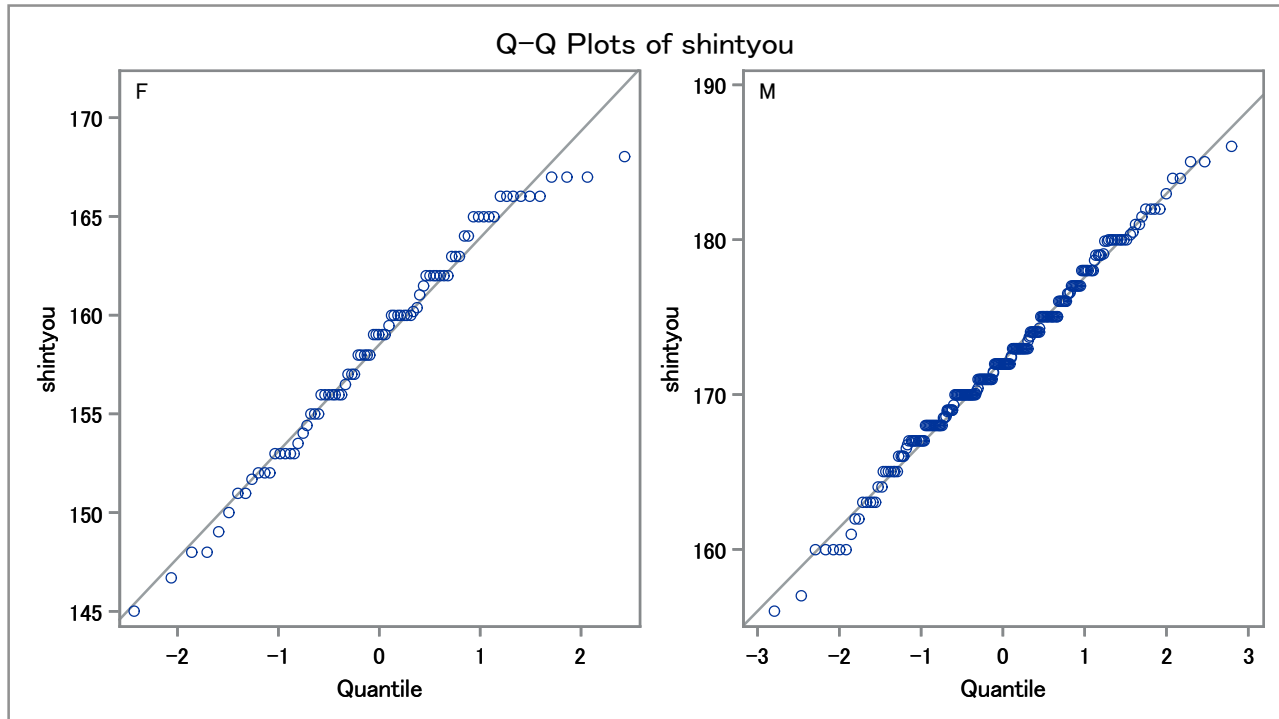
Method	Variances	DF	t Value	Pr > t
Pooled	Equal	323	-19.93	<.0001
Satterthwaite	Unequal	141.81	-19.90	<.0001

Equality of Variances				
Method	Num DF	Den DF	F Value	Pr > F
Folded F	82	241	1.01	0.9484



The TTEST Procedure

Variable: shintyou



Variable: tajjyuu

sex	Method	N	Mean	Std Dev	Std Err	Minimum	Maximum
F		83	48.6988	4.7230	0.5184	35.0000	60.0000
M		242	62.2388	7.9277	0.5096	46.0000	100.0
Diff (1-2)	Pooled		-13.5400	7.2496	0.9222		
Diff (1-2)	Satterthwaite		-13.5400		0.7270		

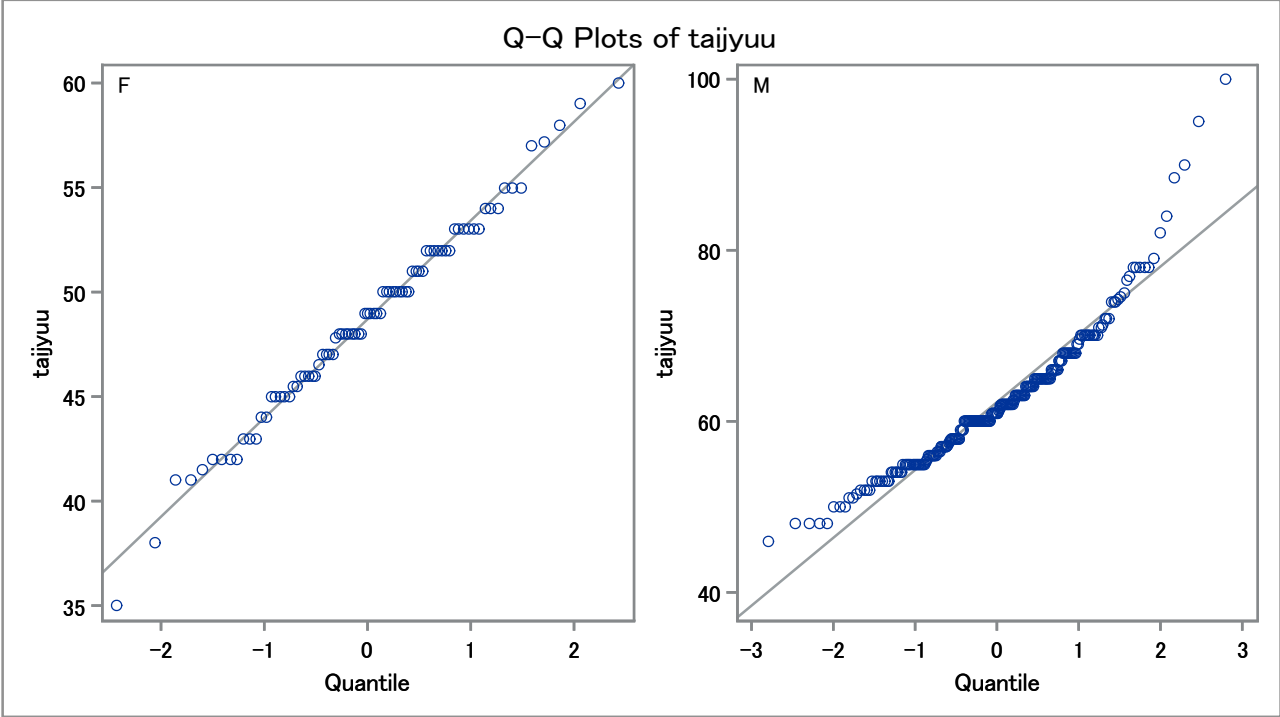
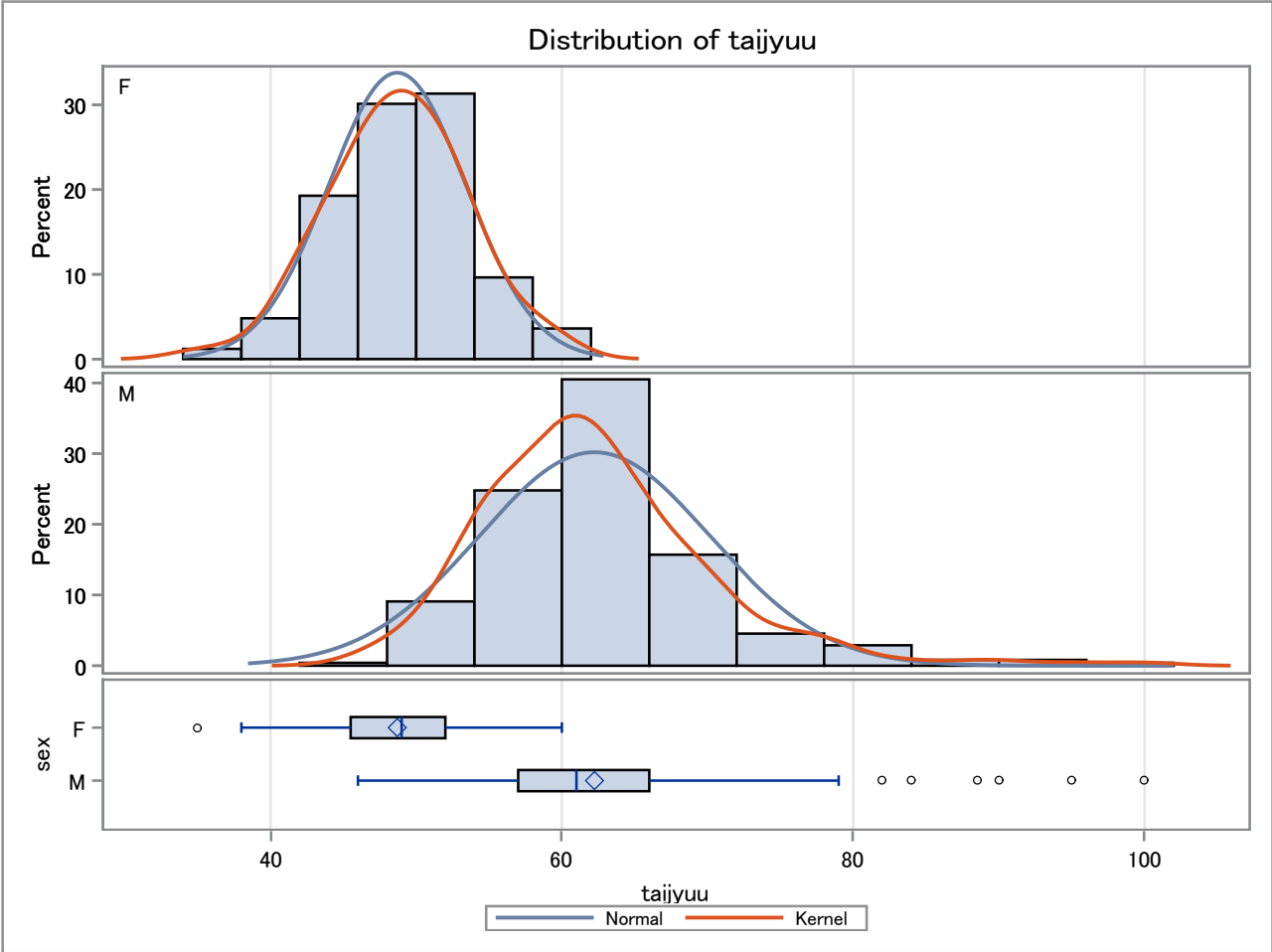
sex	Method	Mean	95% CL Mean		Std Dev	95% CL Std Dev	
F		48.6988	47.6675	49.7301	4.7230	4.0977	5.5753
M		62.2388	61.2350	63.2427	7.9277	7.2788	8.7048
Diff (1-2)	Pooled	-13.5400	-15.3543	-11.7258	7.2496	6.7311	7.8553
Diff (1-2)	Satterthwaite	-13.5400	-14.9721	-12.1080			

Method	Variances	DF	t Value	Pr > t
Pooled	Equal	323	-14.68	<.0001
Satterthwaite	Unequal	240.6	-18.63	<.0001

Equality of Variances				
Method	Num DF	Den DF	F Value	Pr > F
Folded F	241	82	2.82	<.0001

The TTEST Procedure

Variable: tajjyuu



The TTEST Procedure

Variable: kyoui

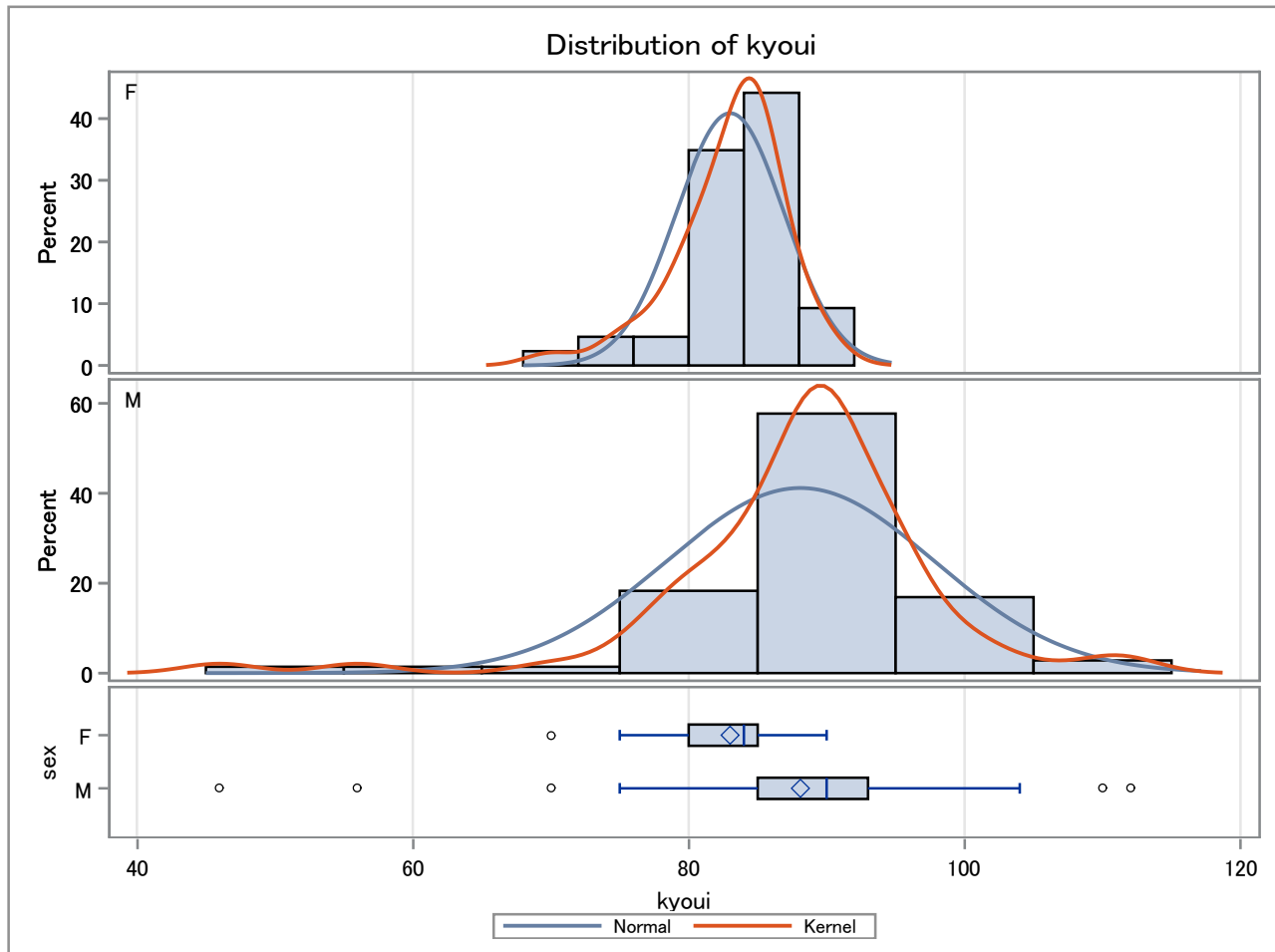
Variable: kyoui

sex	Method	N	Mean	Std Dev	Std Err	Minimum	Maximum
F		43	83.0000	3.9036	0.5953	70.0000	90.0000
M		71	88.0986	9.6853	1.1494	46.0000	112.0
Diff (1-2)	Pooled		-5.0986	8.0213	1.5500		
Diff (1-2)	Satterthwaite		-5.0986		1.2944		

sex	Method	Mean	95% CL Mean		Std Dev	95% CL Std Dev	
F		83.0000	81.7986	84.2014	3.9036	3.2187	4.9615
M		88.0986	85.8061	90.3911	9.6853	8.3128	11.6049
Diff (1-2)	Pooled	-5.0986	-8.1698	-2.0274	8.0213	7.0944	9.2292
Diff (1-2)	Satterthwaite	-5.0986	-7.6665	-2.5306			

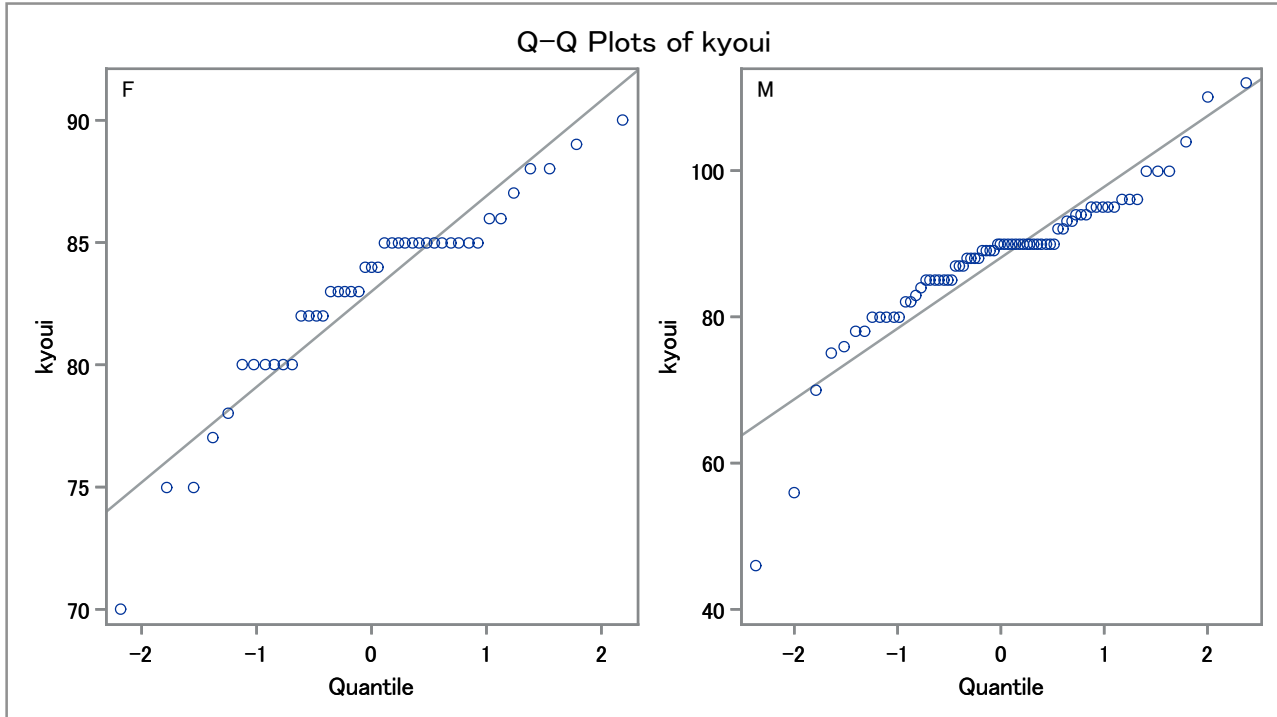
Method	Variances	DF	t Value	Pr > t
Pooled	Equal	112	-3.29	0.0013
Satterthwaite	Unequal	100.53	-3.94	0.0002

Equality of Variances				
Method	Num DF	Den DF	F Value	Pr > F
Folded F	70	42	6.16	<.0001



The TTEST Procedure

Variable: kyoui



Variable: kodukai

sex	Method	N	Mean	Std Dev	Std Err	Minimum	Maximum
F		78	49314.1	48483.6	5489.7	0	300000
M		229	48620.1	52676.9	3481.0	0	350000
Diff (1-2)	Pooled		694.0	51650.4	6771.4		
Diff (1-2)	Satterthwaite		694.0		6500.3		

sex	Method	Mean	95% CL Mean		Std Dev	95% CL Std Dev	
F		49314.1	38382.7	60245.5	48483.6	41887.9	57564.0
M		48620.1	41761.1	55479.1	52676.9	48253.8	57999.7
Diff (1-2)	Pooled	694.0	-12630.5	14018.6	51650.4	47856.7	56102.5
Diff (1-2)	Satterthwaite	694.0	-12154.7	13542.7			

Method	Variances	DF	t Value	Pr > t
Pooled	Equal	305	0.10	0.9184
Satterthwaite	Unequal	143.53	0.11	0.9151

Equality of Variances				
Method	Num DF	Den DF	F Value	Pr > F
Folded F	228	77	1.18	0.3980

The TTEST Procedure

Variable: kodukai

