

| Obs | sex | shintyou | taijyuu | kyoui | jitaku | kodukai | carryer | tsuuwa |
|-----|-----|----------|---------|-------|--------|---------|----------|--------|
| 1 | F | 145.0 | 38 | . | J | 10000 | | . |
| 2 | F | 146.7 | 41 | 85 | J | 10000 | Vodafone | 6000 |
| 3 | F | 148.0 | 42 | . | J | 50000 | | . |
| 4 | F | 148.0 | 43 | 80 | J | 50000 | DoCoMo | 4000 |
| 5 | F | 148.9 | . | . | J | 60000 | | . |

The MEANS Procedure

| Variable | N | Mean | Std Dev | Minimum | Maximum |
|----------|-----|-------------|-----------|-------------|-------------|
| shintyou | 384 | 168.1773438 | 8.0907472 | 145.0000000 | 186.0000000 |
| taijyuu | 350 | 58.9580000 | 9.3019289 | 35.0000000 | 100.0000000 |
| kyoui | 122 | 86.0606557 | 8.1876298 | 46.0000000 | 112.0000000 |
| kodukai | 369 | 47967.48 | 49481.75 | 0 | 350000.00 |
| tsuuwa | 166 | 6464.41 | 4488.20 | 0 | 30000.00 |

The UNIVARIATE Procedure
Variable: shintyou

| Moments | | | |
|-----------------|------------|------------------|------------|
| N | 384 | Sum Weights | 384 |
| Mean | 168.177344 | Sum Observations | 64580.1 |
| Std Deviation | 8.0907472 | Variance | 65.4601903 |
| Skewness | -0.3711432 | Kurtosis | -0.3699954 |
| Uncorrected SS | 10885980.9 | Corrected SS | 25071.2529 |
| Coeff Variation | 4.81084254 | Std Error Mean | 0.41287921 |

| Basic Statistical Measures | | | |
|----------------------------|----------|---------------------|----------|
| Location | | Variability | |
| Mean | 168.1773 | Std Deviation | 8.09075 |
| Median | 170.0000 | Variance | 65.46019 |
| Mode | 170.0000 | Range | 41.00000 |
| | | Interquartile Range | 12.00000 |

| Tests for Location: Mu0=0 | | | | |
|---------------------------|-----------|----------|----------|--------|
| Test | Statistic | | p Value | |
| Student's t | t | 407.3282 | Pr > t | <.0001 |
| Sign | M | 192 | Pr >= M | <.0001 |
| Signed Rank | S | 36960 | Pr >= S | <.0001 |

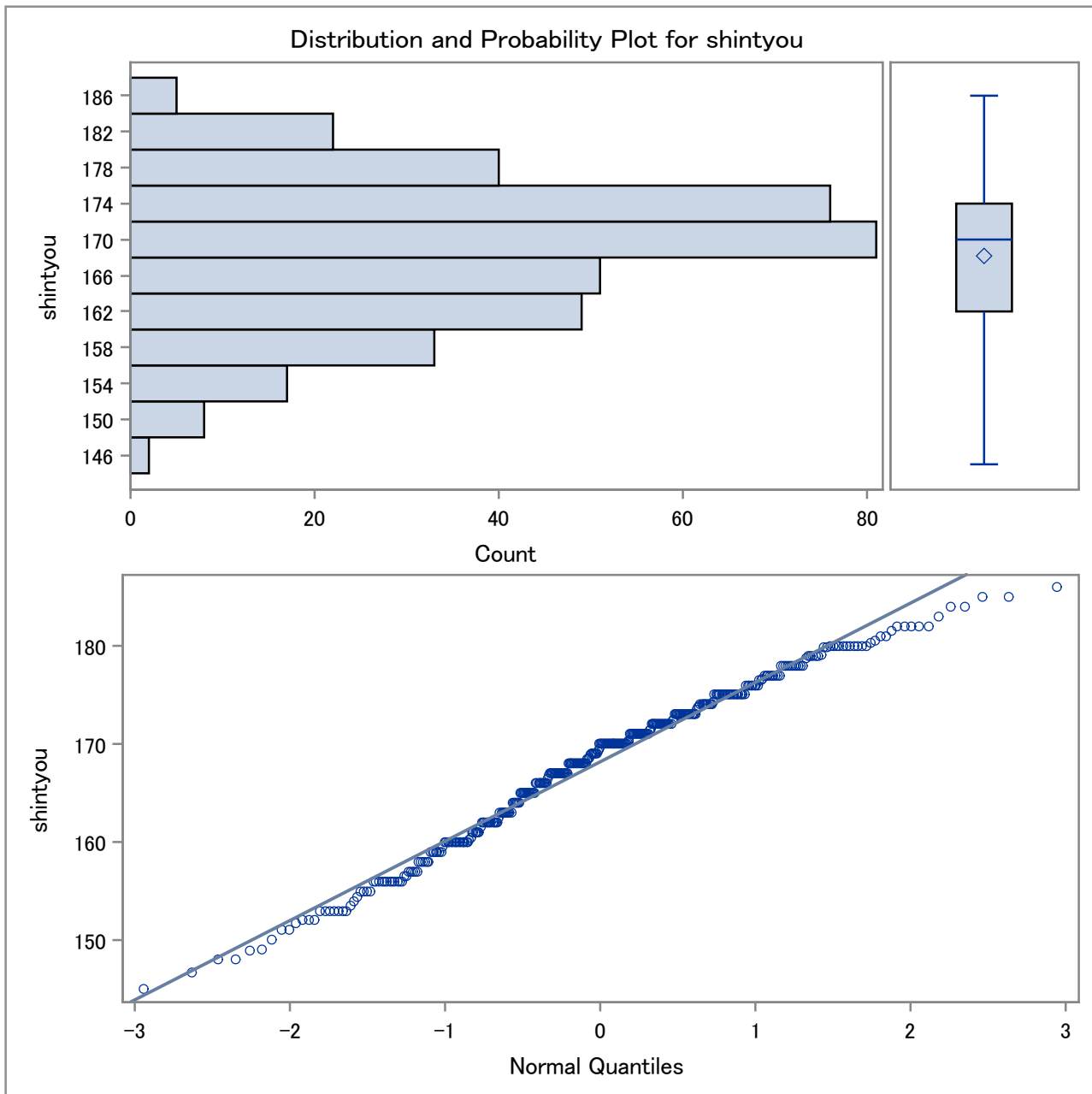
| Quantiles (Definition 5) | |
|--------------------------|----------|
| Level | Quantile |
| 100% Max | 186 |
| 99% | 184 |
| 95% | 180 |
| 90% | 178 |
| 75% Q3 | 174 |
| 50% Median | 170 |
| 25% Q1 | 162 |
| 10% | 156 |
| 5% | 153 |
| 1% | 148 |
| 0% Min | 145 |

| Extreme Observations | | | |
|----------------------|-----|---------|-----|
| Lowest | | Highest | |
| Value | Obs | Value | Obs |
| 145.0 | 1 | 184 | 380 |
| 146.7 | 2 | 184 | 381 |
| 148.0 | 4 | 185 | 382 |

The UNIVARIATE Procedure
Variable: shintyou

| Extreme Observations | | | |
|----------------------|-----|---------|-----|
| Lowest | | Highest | |
| Value | Obs | Value | Obs |
| 148.0 | 3 | 185 | 383 |
| 148.9 | 5 | 186 | 384 |

| Missing Values | | | |
|----------------|-------|------------|-------------|
| Missing Value | Count | Percent Of | |
| | | All Obs | Missing Obs |
| . | 15 | 3.76 | 100.00 |



The UNIVARIATE Procedure
 Variable: tajjyuu

| Moments | | | |
|-----------------|------------|------------------|------------|
| N | 350 | Sum Weights | 350 |
| Mean | 58.958 | Sum Observations | 20635.3 |
| Std Deviation | 9.30192891 | Variance | 86.5258814 |
| Skewness | 0.66342613 | Kurtosis | 1.52783161 |
| Uncorrected SS | 1246813.55 | Corrected SS | 30197.5326 |
| Coeff Variation | 15.7772124 | Std Error Mean | 0.49720901 |

| Basic Statistical Measures | | | |
|----------------------------|----------|---------------------|----------|
| Location | | Variability | |
| Mean | 58.95800 | Std Deviation | 9.30193 |
| Median | 59.00000 | Variance | 86.52588 |
| Mode | 60.00000 | Range | 65.00000 |
| | | Interquartile Range | 12.00000 |

| Tests for Location: Mu0=0 | | | | |
|---------------------------|-----------|----------|----------|--------|
| Test | Statistic | | p Value | |
| Student's t | t | 118.5779 | Pr > t | <.0001 |
| Sign | M | 175 | Pr >= M | <.0001 |
| Signed Rank | S | 30712.5 | Pr >= S | <.0001 |

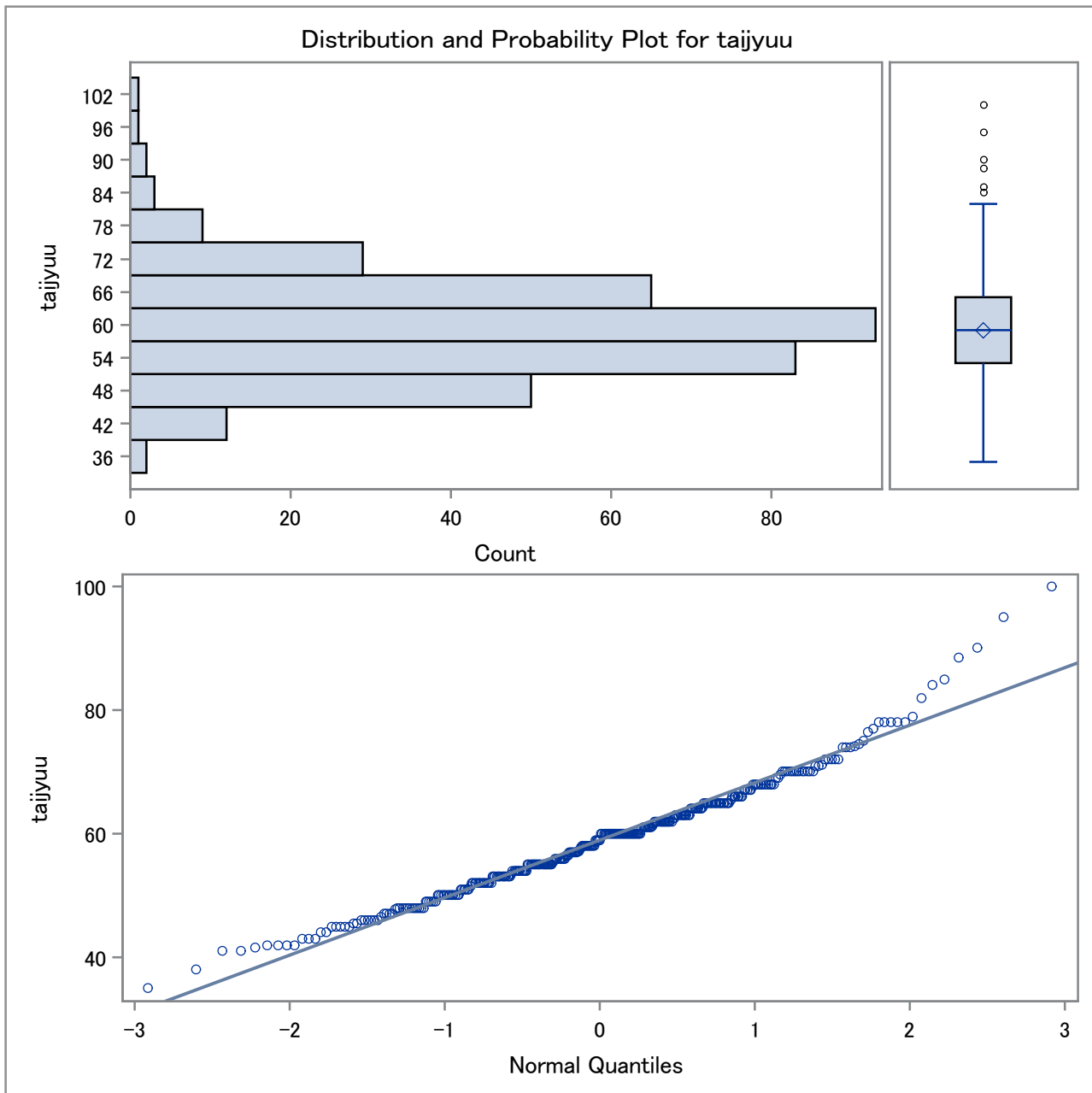
| Quantiles (Definition 5) | |
|--------------------------|----------|
| Level | Quantile |
| 100% Max | 100.0 |
| 99% | 88.5 |
| 95% | 74.2 |
| 90% | 70.0 |
| 75% Q3 | 65.0 |
| 50% Median | 59.0 |
| 25% Q1 | 53.0 |
| 10% | 48.0 |
| 5% | 45.0 |
| 1% | 41.0 |
| 0% Min | 35.0 |

| Extreme Observations | | | |
|----------------------|-----|---------|-----|
| Lowest | | Highest | |
| Value | Obs | Value | Obs |
| 35.0 | 11 | 85.0 | 346 |
| 38.0 | 1 | 88.5 | 190 |
| 41.0 | 14 | 90.0 | 378 |

The UNIVARIATE Procedure
Variable: tajjyuu

| Extreme Observations | | | |
|----------------------|-----|---------|-----|
| Lowest | | Highest | |
| Value | Obs | Value | Obs |
| 41.0 | 2 | 95.0 | 347 |
| 41.5 | 10 | 100.0 | 348 |

| Missing Values | | | |
|----------------|-------|------------|-------------|
| Missing Value | Count | Percent Of | |
| | | All Obs | Missing Obs |
| . | 49 | 12.28 | 100.00 |



The UNIVARIATE Procedure
Variable: shintyou

| Moments | | | |
|-----------------|------------|------------------|------------|
| N | 384 | Sum Weights | 384 |
| Mean | 168.177344 | Sum Observations | 64580.1 |
| Std Deviation | 8.0907472 | Variance | 65.4601903 |
| Skewness | -0.3711432 | Kurtosis | -0.3699954 |
| Uncorrected SS | 10885980.9 | Corrected SS | 25071.2529 |
| Coeff Variation | 4.81084254 | Std Error Mean | 0.41287921 |

| Basic Statistical Measures | | | |
|----------------------------|----------|---------------------|----------|
| Location | | Variability | |
| Mean | 168.1773 | Std Deviation | 8.09075 |
| Median | 170.0000 | Variance | 65.46019 |
| Mode | 170.0000 | Range | 41.00000 |
| | | Interquartile Range | 12.00000 |

| Tests for Location: Mu0=0 | | | | |
|---------------------------|-----------|----------|----------|--------|
| Test | Statistic | | p Value | |
| Student's t | t | 407.3282 | Pr > t | <.0001 |
| Sign | M | 192 | Pr >= M | <.0001 |
| Signed Rank | S | 36960 | Pr >= S | <.0001 |

| Quantiles (Definition 5) | |
|--------------------------|----------|
| Level | Quantile |
| 100% Max | 186 |
| 99% | 184 |
| 95% | 180 |
| 90% | 178 |
| 75% Q3 | 174 |
| 50% Median | 170 |
| 25% Q1 | 162 |
| 10% | 156 |
| 5% | 153 |
| 1% | 148 |
| 0% Min | 145 |

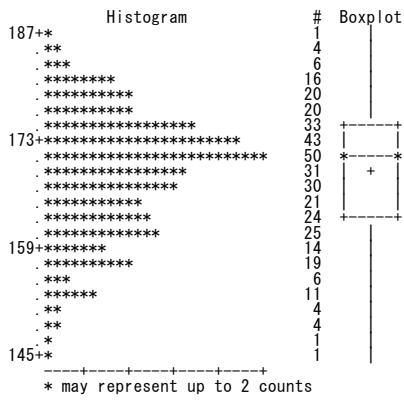
| Extreme Observations | | | |
|----------------------|-----|---------|-----|
| Lowest | | Highest | |
| Value | Obs | Value | Obs |
| 145.0 | 1 | 184 | 380 |
| 146.7 | 2 | 184 | 381 |
| 148.0 | 4 | 185 | 382 |

The UNIVARIATE Procedure
Variable: shintyou

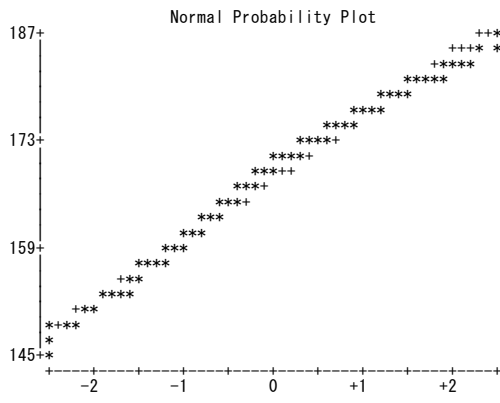
| Extreme Observations | | | |
|----------------------|-----|---------|-----|
| Lowest | | Highest | |
| Value | Obs | Value | Obs |
| 148.0 | 3 | 185 | 383 |
| 148.9 | 5 | 186 | 384 |

| Missing Values | | | |
|----------------|-------|------------|-------------|
| Missing Value | Count | Percent Of | |
| | | All Obs | Missing Obs |
| . | 15 | 3.76 | 100.00 |

The UNIVARIATE Procedure
 Variable: shintyou



The UNIVARIATE Procedure
Variable: shintyou



The UNIVARIATE Procedure
Variable: tajjyuu

| Moments | | | |
|-----------------|------------|------------------|------------|
| N | 350 | Sum Weights | 350 |
| Mean | 58.958 | Sum Observations | 20635.3 |
| Std Deviation | 9.30192891 | Variance | 86.5258814 |
| Skewness | 0.66342613 | Kurtosis | 1.52783161 |
| Uncorrected SS | 1246813.55 | Corrected SS | 30197.5326 |
| Coeff Variation | 15.7772124 | Std Error Mean | 0.49720901 |

| Basic Statistical Measures | | | |
|----------------------------|----------|---------------------|----------|
| Location | | Variability | |
| Mean | 58.95800 | Std Deviation | 9.30193 |
| Median | 59.00000 | Variance | 86.52588 |
| Mode | 60.00000 | Range | 65.00000 |
| | | Interquartile Range | 12.00000 |

| Tests for Location: Mu0=0 | | | | |
|---------------------------|-----------|----------|----------|--------|
| Test | Statistic | | p Value | |
| Student's t | t | 118.5779 | Pr > t | <.0001 |
| Sign | M | 175 | Pr >= M | <.0001 |
| Signed Rank | S | 30712.5 | Pr >= S | <.0001 |

| Quantiles (Definition 5) | |
|--------------------------|----------|
| Level | Quantile |
| 100% Max | 100.0 |
| 99% | 88.5 |
| 95% | 74.2 |
| 90% | 70.0 |
| 75% Q3 | 65.0 |
| 50% Median | 59.0 |
| 25% Q1 | 53.0 |
| 10% | 48.0 |
| 5% | 45.0 |
| 1% | 41.0 |
| 0% Min | 35.0 |

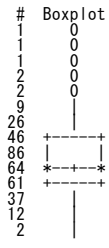
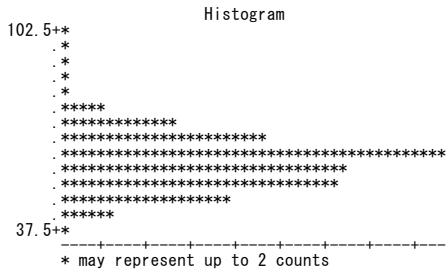
| Extreme Observations | | | |
|----------------------|-----|---------|-----|
| Lowest | | Highest | |
| Value | Obs | Value | Obs |
| 35.0 | 11 | 85.0 | 346 |
| 38.0 | 1 | 88.5 | 190 |
| 41.0 | 14 | 90.0 | 378 |

The UNIVARIATE Procedure
Variable: tajjyuu

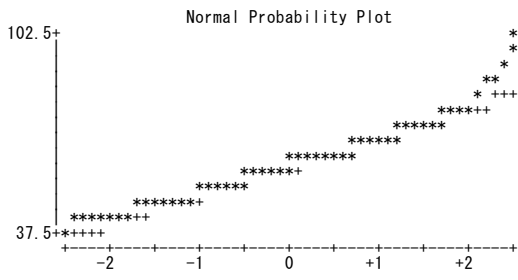
| Extreme Observations | | | |
|----------------------|-----|---------|-----|
| Lowest | | Highest | |
| Value | Obs | Value | Obs |
| 41.0 | 2 | 95.0 | 347 |
| 41.5 | 10 | 100.0 | 348 |

| Missing Values | | | |
|----------------|-------|------------|-------------|
| Missing Value | Count | Percent Of | |
| | | All Obs | Missing Obs |
| . | 49 | 12.28 | 100.00 |

The UNIVARIATE Procedure
 Variable: tajjyuu



The UNIVARIATE Procedure
Variable: tajjyuu



The FREQ Procedure

| shintyou | Frequency | Percent | Cumulative Frequency | Cumulative Percent |
|------------------------|-----------|---------|----------------------|--------------------|
| -150 | 6 | 1.56 | 6 | 1.56 |
| 150-155 | 17 | 4.43 | 23 | 5.99 |
| 155-160 | 37 | 9.64 | 60 | 15.63 |
| 160-165 | 56 | 14.58 | 116 | 30.21 |
| 165-170 | 75 | 19.53 | 191 | 49.74 |
| 170-175 | 104 | 27.08 | 295 | 76.82 |
| 175-180 | 62 | 16.15 | 357 | 92.97 |
| 180-185 | 24 | 6.25 | 381 | 99.22 |
| 185-190 | 3 | 0.78 | 384 | 100.00 |
| Frequency Missing = 15 | | | | |

Frequency
Percent
Row Pct
Col Pct

| sex | shintyou | | | | | | | | | Total |
|------------------------|----------|---------|---------|---------|---------|---------|---------|---------|---------|--------|
| | -150 | 150-155 | 155-160 | 160-165 | 165-170 | 170-175 | 175-180 | 180-185 | 185-190 | |
| F | 6 | 17 | 35 | 38 | 19 | 2 | 0 | 0 | 0 | 117 |
| | 1.67 | 4.74 | 9.75 | 10.58 | 5.29 | 0.56 | 0.00 | 0.00 | 0.00 | 32.59 |
| | 5.13 | 14.53 | 29.91 | 32.48 | 16.24 | 1.71 | 0.00 | 0.00 | 0.00 | |
| | 100.00 | 100.00 | 94.59 | 71.70 | 27.54 | 2.02 | 0.00 | 0.00 | 0.00 | |
| M | 0 | 0 | 2 | 15 | 50 | 97 | 54 | 21 | 3 | 242 |
| | 0.00 | 0.00 | 0.56 | 4.18 | 13.93 | 27.02 | 15.04 | 5.85 | 0.84 | 67.41 |
| | 0.00 | 0.00 | 0.83 | 6.20 | 20.66 | 40.08 | 22.31 | 8.68 | 1.24 | |
| | 0.00 | 0.00 | 5.41 | 28.30 | 72.46 | 97.98 | 100.00 | 100.00 | 100.00 | |
| Total | 6 | 17 | 37 | 53 | 69 | 99 | 54 | 21 | 3 | 359 |
| | 1.67 | 4.74 | 10.31 | 14.76 | 19.22 | 27.58 | 15.04 | 5.85 | 0.84 | 100.00 |
| Frequency Missing = 40 | | | | | | | | | | |