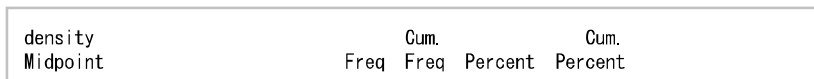
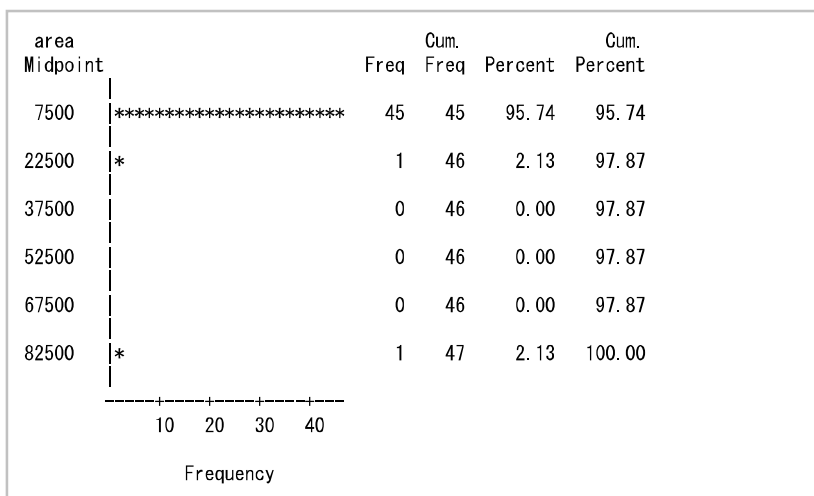
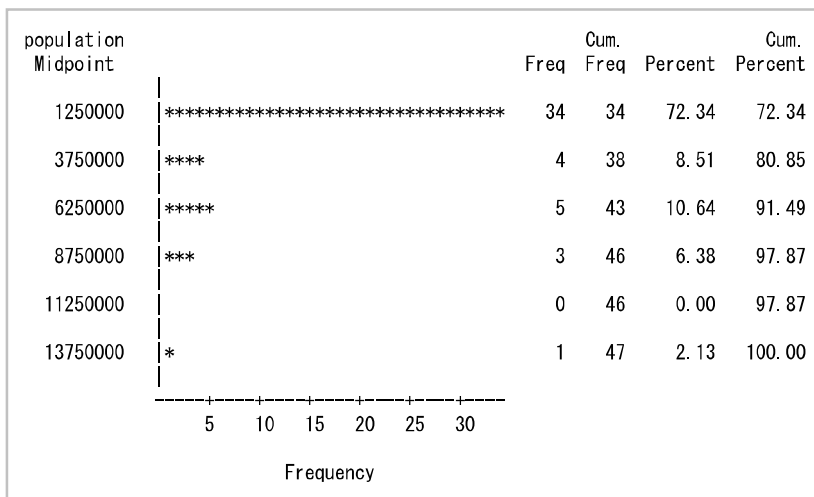
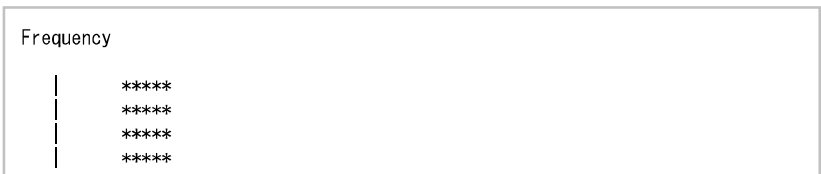
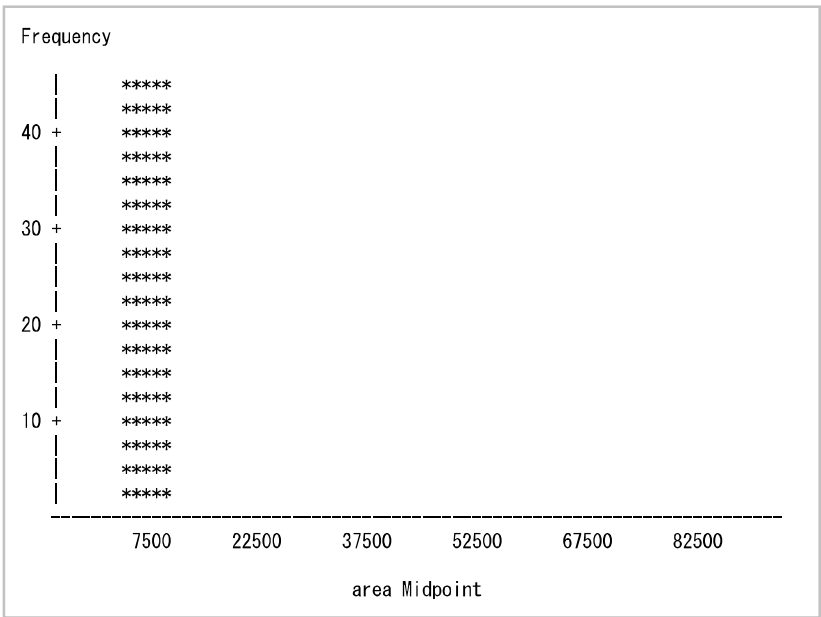
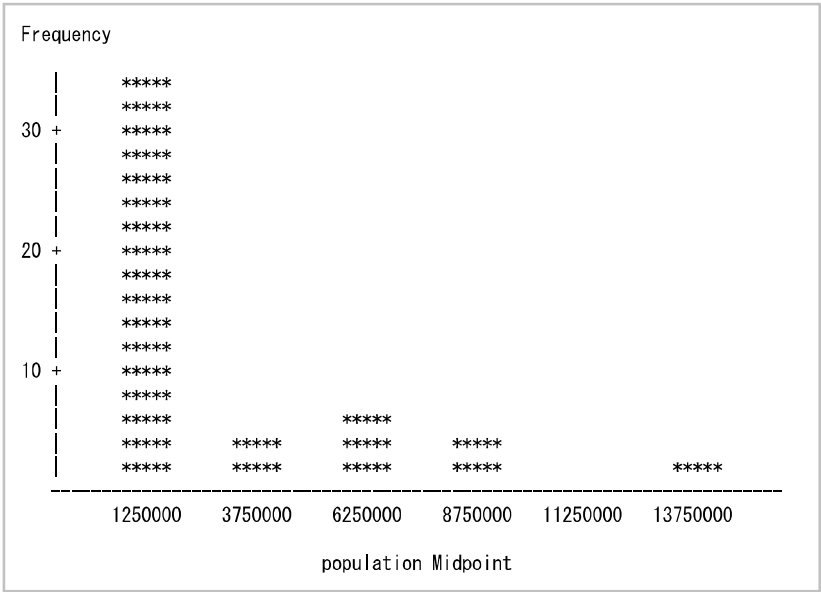
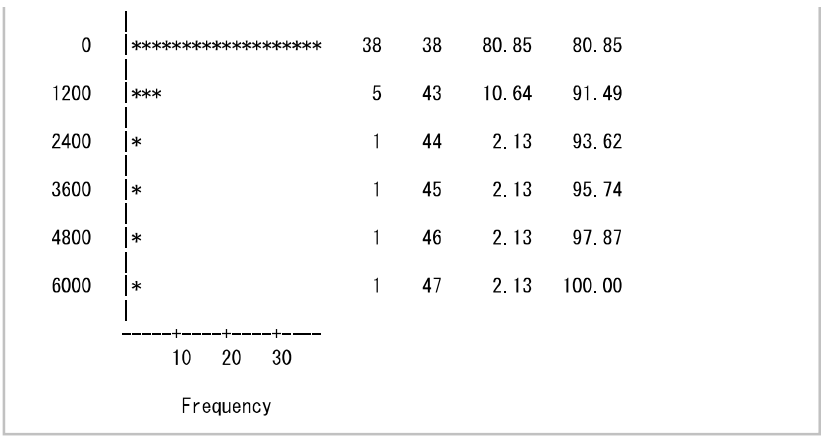


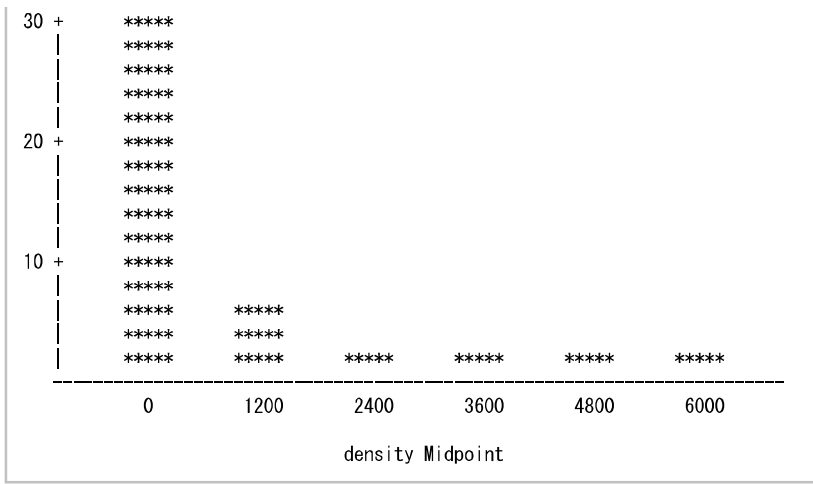
Obs	PName	CName	population	area	density
1	北海	札幌市	5248552	83424.39	66.93
2	青森	青森市	1246138	9645.65	129.19
3	岩手	盛岡市	1226430	15275.01	80.29
4	宮城	仙台市	2303160	7282.29	316.27
5	秋田	秋田市	965968	11637.52	83.00
6	山形	山形市	1077057	9323.15	115.53
7	福島	福島市	1847950	13783.90	134.07
8	茨城	水戸市	2868041	6097.32	470.38
9	栃木	宇都宮市	1942312	6408.09	303.10
10	群馬	前橋市	1937626	6362.28	304.55

The MEANS Procedure

Variable	N	Mean	Std Dev	Minimum	Maximum
population	47	2685449.83	2782682.90	555663.00	13942856.00
area	47	8042.02	11694.86	1876.79	83424.39
density	47	656.1510638	1216.47	66.9300000	6354.79







The UNIVARIATE Procedure  
Variable: population

Moments			
N	47	Sum Weights	47
Mean	2685449.83	Sum Observations	126216142
Std Deviation	2782682.9	Variance	7.74332E12
Skewness	2.25036296	Kurtosis	5.39155057
Uncorrected SS	6.9514E14	Corrected SS	3.56193E14
Coeff Variation	103.620737	Std Error Mean	405896.017

Basic Statistical Measures			
Location		Variability	
Mean	2685450	Std Deviation	2782683
Median	1599984	Variance	7.74332E12
Mode	.	Range	13387193
		Interquartile Range	1735910

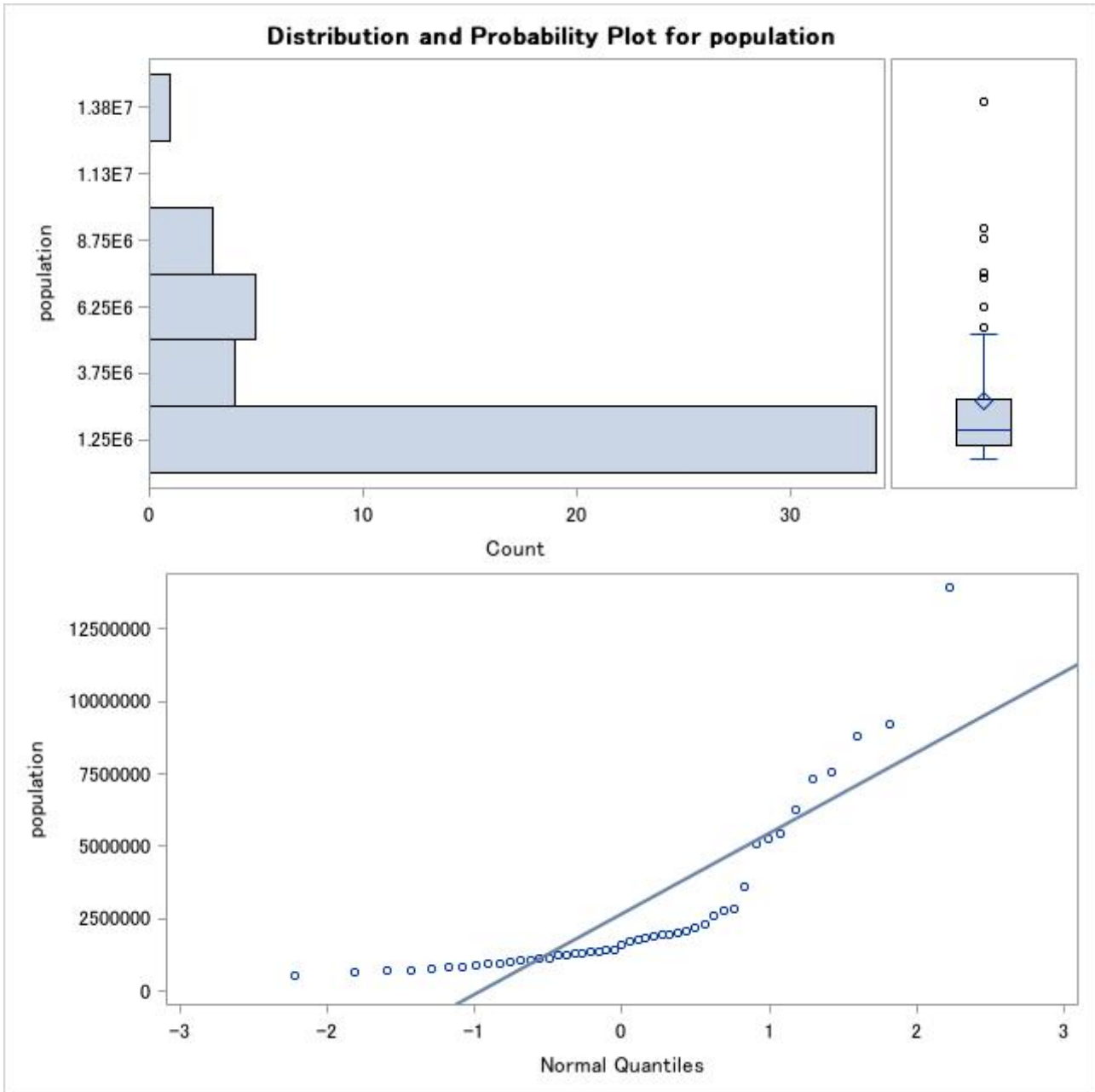
Tests for Location: Mu0=0				
Test	Statistic		p Value	
Student's t	t	6.616103	Pr >  t	<.0001
Sign	M	23.5	Pr >=  M	<.0001
Signed Rank	S	564	Pr >=  S	<.0001

Quantiles (Definition 5)	
Level	Quantile
100% Max	13942856
99%	13942856
95%	8823453
90%	7337330
75% Q3	2807987
50% Median	1599984
25% Q1	1072077
10%	767742
5%	697674
1%	555663
0% Min	555663

Extreme Observations	
Lowest	Highest

Value	Obs	Value	Obs
Lowest		Highest	

Value	Obs	Value	Obs
555663	31	7337330	11
673891	32	7552873	23
697674	39	8823453	27
728633	36	9200166	14
767742	18	13942856	13



The UNIVARIATE Procedure  
Variable: area

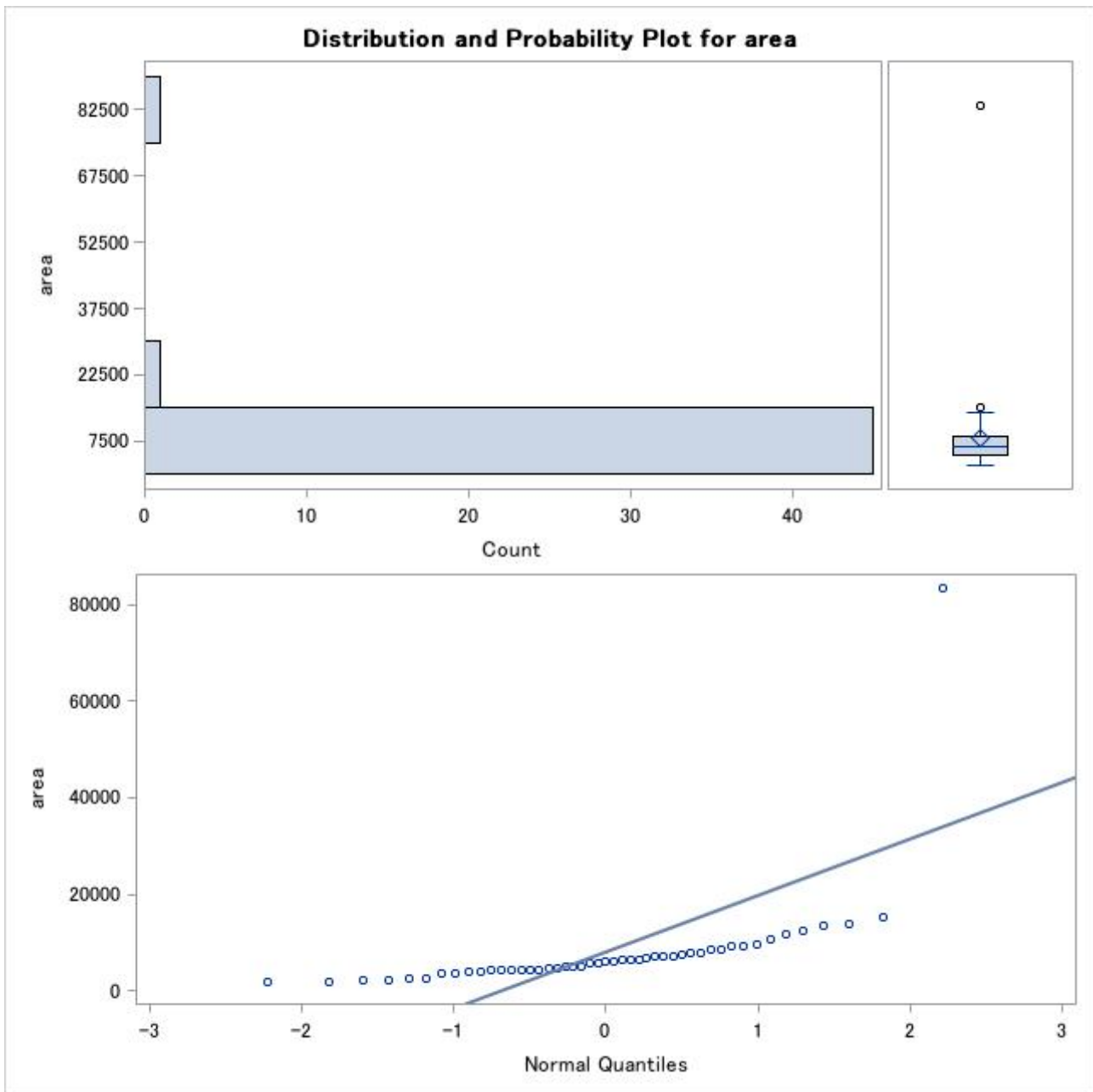
Moments			
N	47	Sum Weights	47
Mean	8042.01936	Sum Observations	377974.91
Std Deviation	11694.8598	Variance	136769746
Skewness	6.06404407	Kurtosis	39.5725925
Uncorrected SS	9331089879	Corrected SS	6291408335
Coeff Variation	145.421931	Std Error Mean	1705.87063

Basic Statistical Measures			
Location		Variability	
Mean	8042.019	Std Deviation	11695
Median	6097.320	Variance	136769746
Mode	.	Range	81548
		Interquartile Range	4254

Tests for Location: Mu0=0				
Test	Statistic		p Value	
Student's t	t	4.71432	Pr >  t	<.0001
Sign	M	23.5	Pr >=  M	<.0001
Signed Rank	S	564	Pr >=  S	<.0001

Quantiles (Definition 5)	
Level	Quantile
100% Max	83424.39
99%	83424.39
95%	13783.90
90%	12584.24
75% Q3	8400.94
50% Median	6097.32
25% Q1	4146.75
10%	2416.30
5%	2194.07
1%	1876.79
0% Min	1876.79

Extreme Observations			
Lowest		Highest	
Value	Obs	Value	Obs
1876.79	37	12584.2	15
1905.29	27	13561.6	20
2194.07	13	13783.9	7
2281.00	47	15275.0	3
2416.30	14	83424.4	1



The UNIVARIATE Procedure  
Variable: density

Moments			
N	47	Sum Weights	47
Mean	656.151064	Sum Observations	30839.1
Std Deviation	1216.4745	Variance	1479810.22
Skewness	3.51397568	Kurtosis	12.7164591
Uncorrected SS	88306378.3	Corrected SS	68071270
Coeff Variation	185.395494	Std Error Mean	177.441043

Basic Statistical Measures			
Location		Variability	
Mean	656.1511	Std Deviation	1216
Median	265.8500	Variance	1479810
Mode	.	Range	6288
		Interquartile Range	296.22000

Tests for Location: Mu0=0		
Test	Statistic	p Value

Tests for Location: $\mu_0=0$				
Test	Statistic		p Value	
Student's t	t	3.697854	Pr >  t	0.0006
Sign	M	23.5	Pr >=  M	<.0001
Signed Rank	S	564	Pr >=  S	<.0001

Quantiles (Definition 5)	
Level	Quantile
100% Max	6354.79
99%	6354.79
95%	3807.54
90%	1460.04
75% Q3	470.38
50% Median	265.85
25% Q1	174.16
10%	100.46
5%	83.00
1%	66.93
0% Min	66.93

Extreme Observations			
Lowest		Highest	
Value	Obs	Value	Obs
66.93	1	1460.04	23
80.29	3	1932.02	11
83.00	5	3807.54	14
98.21	39	4631.03	27
100.46	32	6354.79	13

