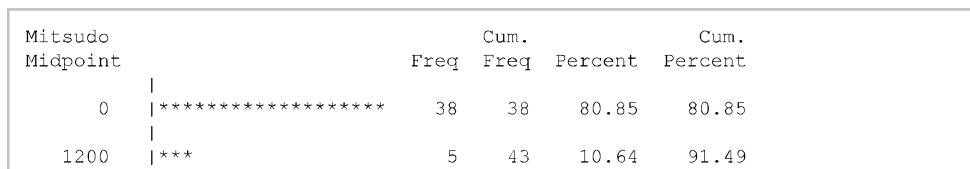
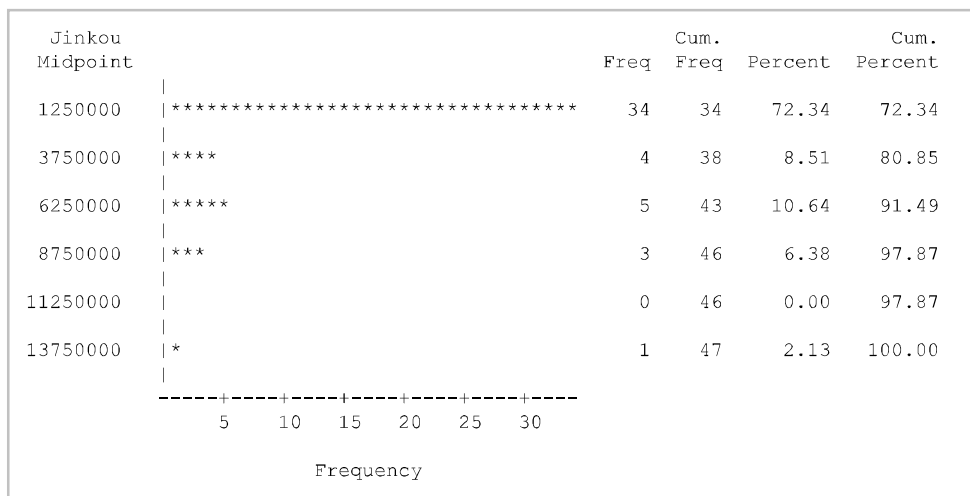
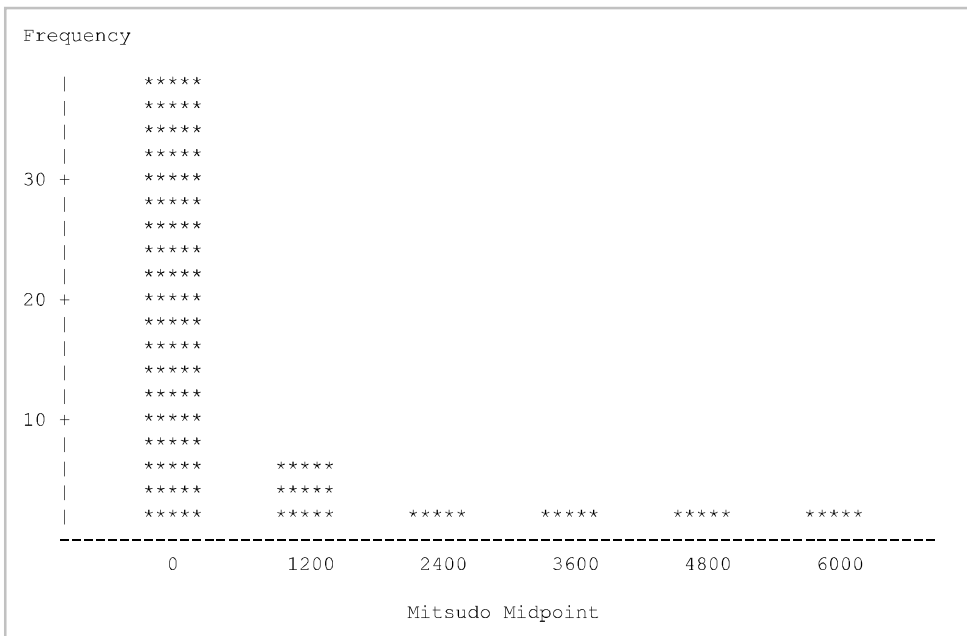
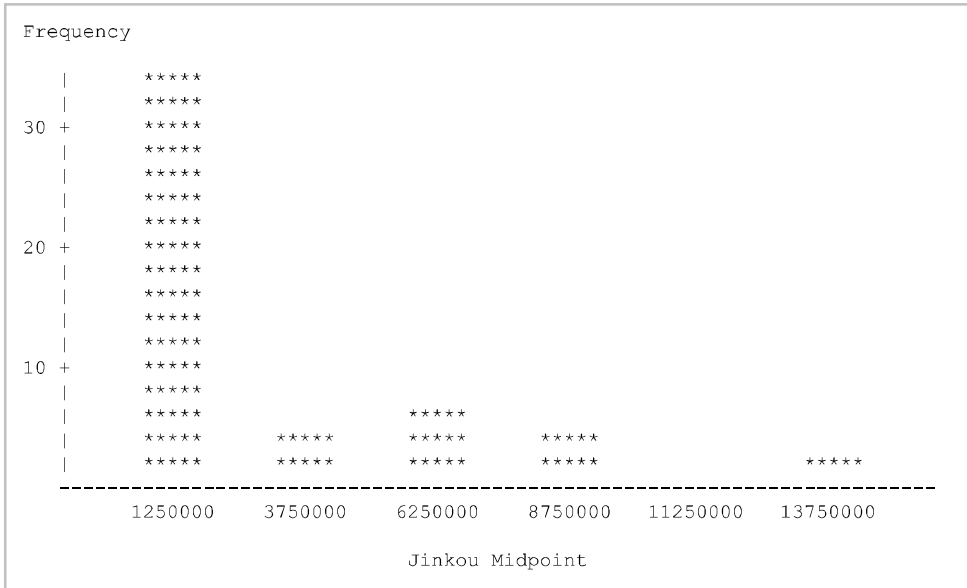
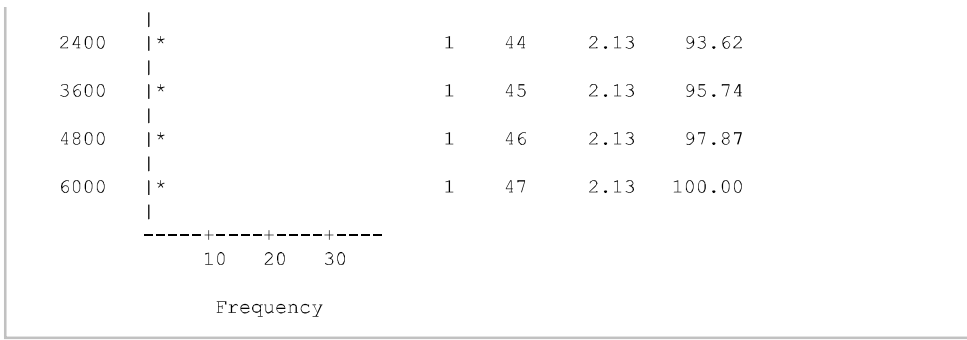


Obs	Pref	CCity	Jinkou	Menseki	Mitsudo	SJinkou	Shi	Ku	Tyou	Son
1	北海道	札幌市	5320523	78420.77	67.85	5381733	35	10	129	15
2	青森県	青森市	1278450	9645.56	132.54	1308265	10	.	22	8
3	岩手県	盛岡市	1254807	15275.01	82.15	1279594	14	.	15	4
4	宮城県	仙台市	2322024	7282.22	318.86	2333899	14	5	20	1
5	秋田県	秋田市	995380	11637.52	85.53	1023119	13	.	9	3
6	山形県	山形市	1101452	9323.15	118.14	1123891	13	.	19	3
7	福島県	福島市	1882666	13783.74	136.59	1914039	13	.	31	15
8	茨城県	水戸市	2896675	6097.12	475.09	2916976	32	.	10	2
9	栃木県	宇都宮市	1961963	6408.09	306.17	1974255	14	.	11	.
10	群馬県	前橋市	1958409	6362.28	307.82	1973115	12	.	15	8
11	埼玉県	さいたま市	7307579	3797.75	1924.19	7266534	40	10	22	1
12	千葉県	千葉市	6255876	5157.64	1212.93	6222666	37	6	16	1
13	東京都	新宿区	13742906	2191.00	6272.44	13515271	26	23	5	8
14	神奈川県	横浜市	9161139	2415.92	3791.99	9126214	19	28	13	1
15	新潟県	新潟市	2266121	12584.18	180.08	2304264	20	8	6	4
16	富山県	富山市	1055893	4247.61	248.59	1066328	10	.	4	1
17	石川県	金沢市	1147447	4186.09	274.11	1154008	11	.	8	.
18	福井県	福井市	778329	4190.49	185.74	786740	9	.	8	.
19	山梨県	甲府市	823580	4465.27	184.44	834930	13	.	8	6
20	長野県	長野市	2076017	13561.56	153.08	2098804	19	.	23	35

The MEANS Procedure

Variable	N	Mean	Std Dev	Minimum	Maximum
Jinkou	47	2696948.81	2757295.89	565233.00	13742906.00
Menseki	47	7935.50	10995.62	1876.73	78420.77
Mitsudo	47	656.2736170	1206.47	67.8500000	6272.44
SJinkou	47	2704143.51	2728692.69	573441.00	13515271.00
Shi	47	16.8297872	8.9935222	4.0000000	40.0000000
Ku	16	12.3750000	8.1965440	4.0000000	31.0000000
Tyou	47	15.8297872	18.0269353	3.0000000	129.0000000
Son	34	5.3823529	7.0281456	1.0000000	35.0000000





The UNIVARIATE Procedure
Variable: Jinkou

Moments			
N	47	Sum Weights	47
Mean	2696948.81	Sum Observations	126756594
Std Deviation	2757295.89	Variance	7.60268E12

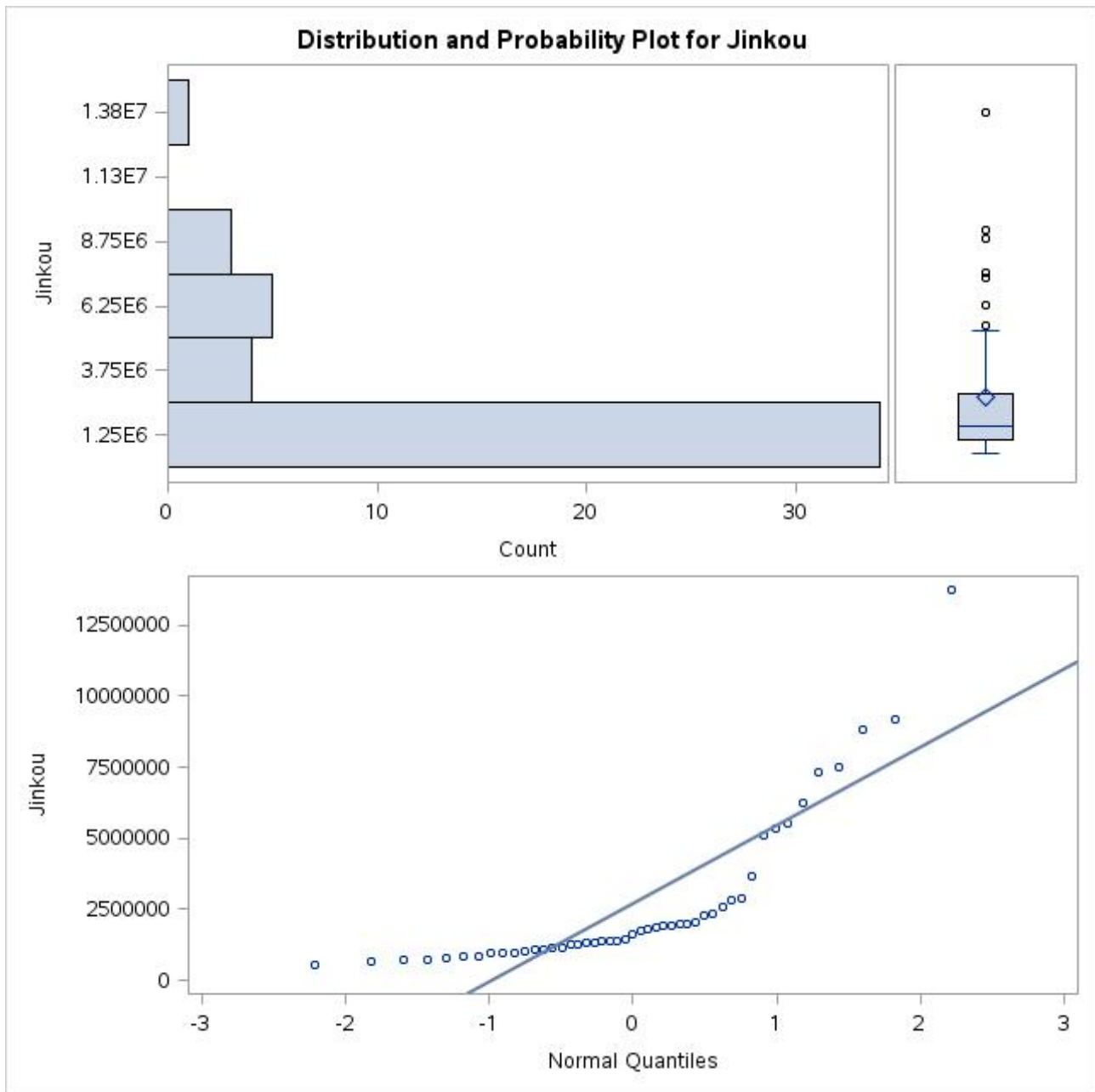
Moments			
Skewness	2.21613498	Kurtosis	5.16964522
Uncorrected SS	6.91579E14	Corrected SS	3.49723E14
Coeff Variation	102.237606	Std Error Mean	402192.942

Basic Statistical Measures			
Location		Variability	
Mean	2696949	Std Deviation	2757296
Median	1624801	Variance	7.60268E12
Mode	.	Range	13177673
		Interquartile Range	1741933

Tests for Location: Mu0=0				
Test	Statistic		p Value	
Student's t	t	6.705609	Pr > t	<.0001
Sign	M	23,5	Pr >= M	<.0001
Signed Rank	S	564	Pr >= S	<.0001

Quantiles (Definition 5)	
Level	Quantile
100% Max	13742906
99%	13742906
95%	8831642
90%	7307579
75% Q3	2830069
50% Median	1624801
25% Q1	1088136
10%	778329
5%	713465
1%	565233
0% Min	565233

Extreme Observations			
Lowest		Highest	
Value	Obs	Value	Obs
565233	31	7307579	11
684668	32	7526911	23
713465	39	8831642	27
743356	36	9161139	14
778329	18	13742906	13



The UNIVARIATE Procedure
Variable: Mitsudo

Moments			
N	47	Sum Weights	47
Mean	656.273617	Sum Observations	30844.86
Std Deviation	1206.46774	Variance	1455564.41
Skewness	3.4965642	Kurtosis	12.542203
Uncorrected SS	87198630.8	Corrected SS	66955963
Coeff Variation	183.836088	Std Error Mean	175.981407

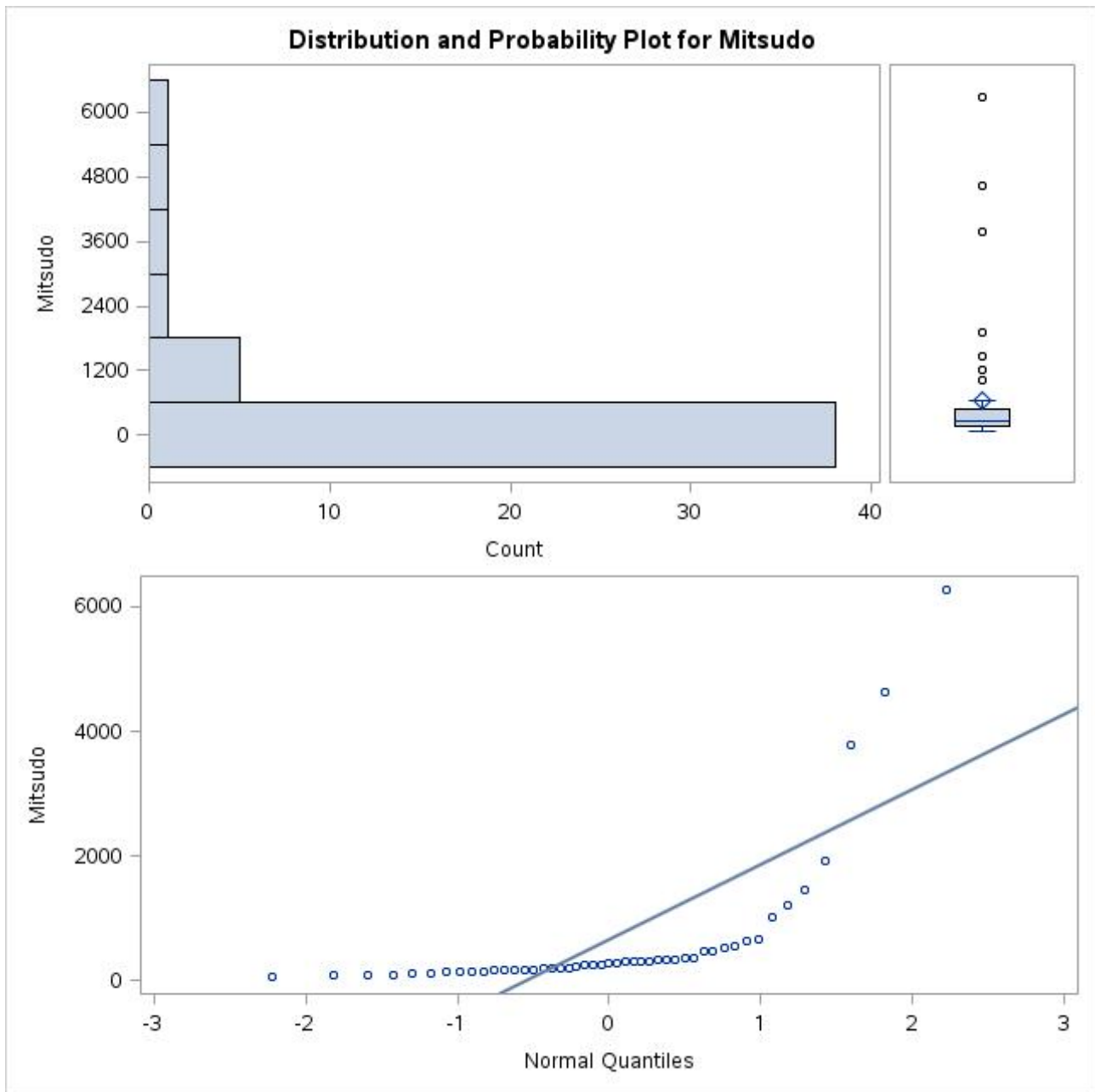
Basic Statistical Measures			
Location		Variability	
Mean	656.2736	Std Deviation	1206
Median	268.2500	Variance	1455564
Mode	.	Range	6205
		Interquartile Range	298.23000

Tests for Location: Mu0=0		
Test	Statistic	p Value

Tests for Location: $\mu_0=0$				
Test	Statistic		p Value	
Student's t	t	3.729221	Pr > t	0.0005
Sign	M	23.5	Pr >= M	<.0001
Signed Rank	S	564	Pr >= S	<.0001

Quantiles (Definition 5)	
Level	Quantile
100% Max	6272.44
99%	6272.44
95%	3791.99
90%	1455.07
75% Q3	475.09
50% Median	268.25
25% Q1	176.86
10%	102.06
5%	85.53
1%	67.85
0% Min	67.85

Extreme Observations			
Lowest		Highest	
Value	Obs	Value	Obs
67.85	1	1455.07	23
82.15	3	1924.19	11
85.53	5	3791.99	14
100.43	39	4635.69	27
102.06	32	6272.44	13



The UNIVARIATE Procedure
Variable: Jinkou

Moments			
N	47	Sum Weights	47
Mean	2696948.81	Sum Observations	126756594
Std Deviation	2757295.89	Variance	7.60268E12
Skewness	2.21613498	Kurtosis	5.16964522
Uncorrected SS	6.91579E14	Corrected SS	3.49723E14
Coeff Variation	102.237606	Std Error Mean	402192.942

Basic Statistical Measures			
Location		Variability	
Mean	2696949	Std Deviation	2757296
Median	1624801	Variance	7.60268E12
Mode	.	Range	13177673
		Interquartile Range	1741933

Tests for Location: $\mu_0=0$

Test	Tests Statistic	Mu0=0	p Value
------	-----------------	-------	---------

Test	Statistic		p Value	
Student's t	t	6.705609	Pr > t	<.0001
Sign	M	23.5	Pr >= M	<.0001
Signed Rank	S	564	Pr >= S	<.0001

Quantiles (Definition 5)	
Level	Quantile
100% Max	13742906
99%	13742906
95%	8831642
90%	7307579
75% Q3	2830069
50% Median	1624801
25% Q1	1088136
10%	778329
5%	713465
1%	565233
0% Min	565233

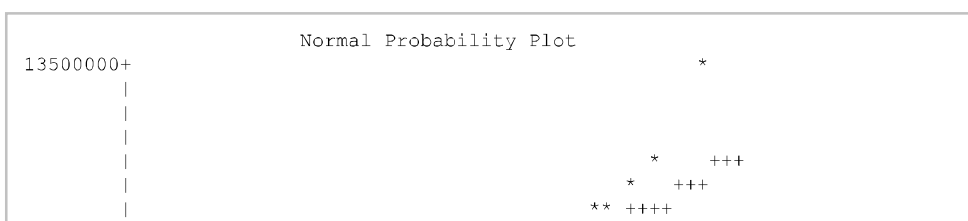
Extreme Observations			
Lowest		Highest	
Value	Obs	Value	Obs
565233	31	7307579	11
684668	32	7526911	23
713465	39	8831642	27
743356	36	9161139	14
778329	18	13742906	13

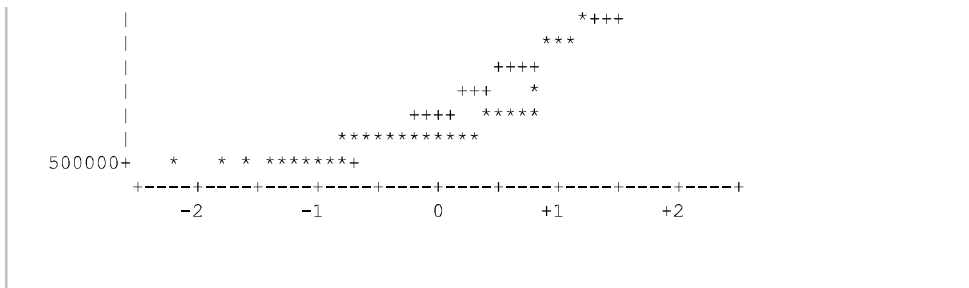
The UNIVARIATE Procedure
Variable: Jinkou

```

Stem Leaf              #  Boxplot
13 7                    1  *
12
11
10
9 2                     1  *
8 8                     1  *
7 35                    2  0
6 3                     1  0
5 135                   3  0
4                        |
3 7                     1  |
2 000133689            9  +---+---+
1 00111123334444468899 20 *-----*
0 67778889             8  |
-----+-----+-----+
Multiply Stem.Leaf by 10**+6
    
```

The UNIVARIATE Procedure
Variable: Jinkou





The UNIVARIATE Procedure
Variable: Mitsudo

Moments			
N	47	Sum Weights	47
Mean	656.273617	Sum Observations	30844.86
Std Deviation	1206.46774	Variance	1455564.41
Skewness	3.4965642	Kurtosis	12.542203
Uncorrected SS	87198630.8	Corrected SS	66955963
Coeff Variation	183.836088	Std Error Mean	175.981407

Basic Statistical Measures			
Location		Variability	
Mean	656.2736	Std Deviation	1206
Median	268.2500	Variance	1455564
Mode	.	Range	6205
		Interquartile Range	298.23000

Tests for Location: Mu0=0				
Test	Statistic		p Value	
Student's t	t	3.729221	Pr > t 	0.0005
Sign	M	23.5	Pr >= M 	<.0001
Signed Rank	S	564	Pr >= S 	<.0001

Quantiles (Definition 5)	
Level	Quantile
100% Max	6272.44
99%	6272.44
95%	3791.99
90%	1455.07
75% Q3	475.09
50% Median	268.25
25% Q1	176.86
10%	102.06
5%	85.53
1%	67.85
0% Min	67.85

Extreme Observations			
Lowest		Highest	
Value	Obs	Value	Obs
67.85	1	1455.07	23
82.15	3	1924.19	11
85.53	5	3791.99	14
100.43	39	4635.69	27
102.06	32	6272.44	13

The UNIVARIATE Procedure
Variable: Mitsudo

```

Stem Leaf                               #   Boxplot
  6 3                                     1     *
  5
  5
  4 6                                     1     *
  4
  3 8                                     1     *
  3
  2
  2
  1 59                                    2     *
  1 02                                    2     0
  0 555667                                6 +-----+
  0 11111111122222222222222222333333334 34 *-----*
-----+-----+-----+-----+-----+-----+-----
Multiply Stem.Leaf by 10**+3
    
```

The UNIVARIATE Procedure
Variable: Mitsudo

